

Fambridge

Marina Guide & Tide Tables 2023



D.R.S. Rigging Ltd

Marine & Architectural
Rigging

Tel/Fax: 01621 784716
Mobile: 07796 032564

email: info@drsrigging.co.uk

Web: www.drsrigging.co.uk

Dave Nicholls...
the rigger that comes to you

Fully trained Seldén/Kemp
Mast Engineer

Competitive prices

Free estimates

No job too small

On site service available

Ring David for
further information
and prices



Fambridge Yacht Haven we love boating

Fambridge Yacht Haven has so much to offer in 2023, and we can't wait for you to join us for the season ahead.

Set within the beautiful Essex countryside, we make the perfect base for you to explore the east coast rivers and creeks – and all of the picturesque anchorages the local area has in store.

At Fambridge we're delighted to offer a back-to-basics family holiday with watersports on the river, mudlarking and fishing on the shore, and wildlife watching across the surrounding salt marshes, tidal flats and grasslands.

Our popular, complimentary Summer Launch Service operates 7 days a week through the summer season. 'Devon Lass' will continue to be helmed by the kind volunteers of the North Fambridge Yacht Club & West Wick Yacht Club between our Yacht Station swinging moorings and the Visitor Pontoon.

We're excited to work on some major installations and improvements across the site over the next 12 months. Amongst other projects, we'll be replacing the marina decking with pet friendly fibreglass grating and installing new environmentally friendly 'closed loop' pressure washing treatment plants which have been custom made for us. Our new washdown plants each contain a hi-tech 4-stage filtration system designed to clean and recycle the water used during the washdown process for further washdown use.

Don't forget to visit the Ferry Boat Inn, now fully open and welcoming our berth holders and visiting yachtsmen. This characterful 16th century pub with beer garden and rooms serves a varied and delicious, locally sourced menu. If you drop in for elevenses or mid-afternoon, you might even find a freshly baked cake on the bar to enjoy with your favourite brew.

Altogether, we're looking forward to welcoming you, your family and your crew to Fambridge this year.

Danyal Adams
Director

Fambridge Yacht Haven,
Church Road, North Fambridge,
Nr Chelmsford, Essex CM3 6LU

VHF: Channel 80
01621 740370 (Marina)
01621 742911 (Yacht Station)
fambridge@yachthavens.com
yachthavens.com

Welcome to Fambridge	2-3
About the marina	4-5
Fambridge marina map	6-7
Berth holder benefits	9
Berthing Options	11
Park & Launch service	13
Boatyard facilities	14-15
On-site Marine Services	17
Berthing fees & boatyard rates	19-21
Your safety & Our environment	23
Cruising inspiration	24-27
TransEurope membership	28-29
Things to do	30-31
Eat, drink & stay	32-33
Finding Fambridge	34-37
Useful contacts	38-39
Fambridge tide tables	



Fambridge⁺

The Jewel in the Crouch

If peace, open space and simplicity are at the top of your sailing wish list, Fambridge is going to tick all of the boxes for you. Throw in incredible, rural beauty and you have the makings of the perfect getaway for you and your family.

Spread over two sites, Fambridge Yacht Haven has everything you need for a weekend visit or long-term stay, or as a permanent base for your boat. Our facilities include pontoon berths, swinging moorings and mud berths. We also provide fantastic boatyard and storage facilities enabling anything from a quick scrub to a completely DIY refit of your boat. We even provide a handy undercover 'Customer Workshop' facility.

- New children's Adventure Play Park
- The vibrant and welcoming, newly renovated, riverside Ferry Boat Inn, on our doorstep
- Just an hour from Central London
- Fantastic on-site boatyard services and customer workshop facility
- The River Breeze Café Bistro on-site, with a simple, fresh menu and licensed bar

Our team have expertise ranging from cruising and racing, to RIBs and motorboats. As a result, we're able to provide advice and guidance from many years of experience on the water, and from cruising the local area.

If you love boating as much as we do, we look forward to welcoming you to Fambridge very soon.

01621 740370

fambridge@yachthavens.com
yachthavens.com



"We're now in our fifth season at Fambridge and I can't see us ever leaving. Fantastic facilities, friendly staff and a relaxed atmosphere in a lovely location."
Bru Peckett,
Berth Holder

About the marina

We're delighted to offer a host of excellent facilities to visitors and berth holders at our marina and Yacht Station.



There's lots more helpful details on our website. Or, if you'd like to talk in person, please visit us at the marina office and we'll be delighted to chat with you.

Enjoy a visitor berth

Visiting boats are welcome on our dedicated 120m visitor pontoon at the Yacht Station with discounted rates on extended weekly and monthly stays.

Friendly and helpful manned reception

Our friendly staff provide invaluable services from the marina office 7 days a week, 365 days a year. Drop in, we're open 0800-1700 all year round.

Luxury washroom facilities and launderette

Enjoy our modern and spacious washroom and laundry facilities with 24-hour access. We're told they're the best facilities on the East Coast!

Extensive boating facilities

- 220 pontoon berths, with water and electric available on every berth
- Large finger berths for vessels up to 20m LOA
- 150 deep-water swinging moorings
- 120 metre visitors pontoon
- Complimentary 7 days a week Summer Launch Service
- TransEurope membership benefits
- On-water diesel at the marina, available during office hours
- Unleaded petrol jerry can service at the marina, and diesel jerry can service at Yacht Station
- On-site boatyard services including lift and scrubs, mast lifting and storage ashore
- 40 & 25 tonne boat hoists, 30 tonne mobile crane, and 2.5 tonne forklift
- Undercover storage for vessels up to 19m LOA
- Marine services on site including engineers, chandler and boat cleaning services

Around the clock security

For complete security, the marina is equipped with CCTV surveillance and our staff are on-site 7 days a week. There are coded barriers at the entrances to our marina, Yacht Station and pontoon bridgeheads, and the marina is flood lit at night.

Children's Adventure Play Park

No matter how much fun you have out on the water, when you come ashore with the family you'll be looking to let the children run off steam. Our Adventure Play Park provides a fun, safe outdoor space with exciting and challenging activities for your children to enjoy.

Food, drink and boating essentials

You'll find all you need at the marina, including an on-site chandlery stocked with basic convenience goods, the popular Ferry Boat Inn, and The River Breeze Café Bistro – serving yachtsman's breakfasts, lunch and dinner.

Other facilities











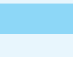
- Super-fast and improved free Wi-Fi
- Recycling facilities and specialist waste disposal
- Dedicated berth holders' car park
- Cradle hire
- Complimentary shuttles to North Fambridge railway station

Stow Creek
leading lights







Entrance

Stow Post
QF(4)Y.8s

Fambridge Yacht Haven

-  Marina Office, Look out and Calor Gas
-  Washrooms
-  A River Breeze Café Bistro
-  B Ferry Boat Inn
-  Car Park
-  Fuel
-  Hoist Dock
-  Adventure Play Park & BBQ Area
-  Recycling and Waste Disposal
-  Electric Car Charging
-  Coastal Path

Safety

-  Fire Extinguisher / Alert Points
-  Safety Ladder
-  Life Rings
-  Blue capped piles
-  Yellow capped piles
-  Fire assembly Point

Businesses in Marina

- 1 River Breeze Café Bistro
- 2 Boatshed Essex
- 3 Workshop & customer workbench
- 4 Anodes Direct
- 5 Brookland Marine Ltd
- 6 Dave Oakman Marine Services
- 7 Society for Sailing Barge Research
- 8 Fambridge Lake - WOT Sup Paddleboarding

Businesses in Yacht Station

- 9 The Ferry Boat Inn
- 10 The Boat Shop WW Ltd
- 11 IBS Boat Supplies
- 12 North Fambridge Yacht Club

Marina

The Avenue

Church Rd

Ferry Rd

Salt Marsh

Yacht Station

Slipway

Mud Berths

Floating
Dinghy
Storage

FL(3)G.4s

FL(3)G.4s

Swinging Moorings



Y109
Y01

Y19

Y81

Y53

B01

F01

F30

B24

B70

B42

Boat
Storage

Slipway

Mast Rack

Undercover
Boat Storage

Boat
Storage

"The friendly nature of Fambridge is likely owing to the fact that most berth holders have been here for many years and have had the time to get to know each other and the staff."

Sailing Today

Your berth holder benefits

We hope you love boating with us as much as we love having you. But just in case you need a little incentive to join us as a berth holder, here are just a few of the perks you'll enjoy.

14 nights free

Enjoy a minimum of 14 free nights free at any Yacht Havens marina. Additional free nights are available by arrangement. Subject to availability.

Early payment discounts

Settle up 3 months in advance and we'll reduce your bill. Simple as that!

TransEurope Marina benefits

Enjoy 50% off visitor berthing at over 80 marinas throughout the UK and Europe as part of the TransEurope Marinas scheme.

Choose a contractor

We're an Open Site. You're welcome to use your choice of third party contractors without them needing to pay a yard fee or commission. Please ask them to share a copy of their insurance documents with the marina office before getting started.

High quality fuel

High quality diesel to fill your tanks.

Dirty Work

We've built a dedicated shot-blasting and 'dirty work' area for our berth holders to use.

Customer workshop facility (aka The Dan Cave)

You'll find a workbench, lighting, 240v power points, a large vice and a 'rusty tool' recycling facility ready for you to work on your own projects, in our sheltered and convenient customer workshop facility, adjacent to our maintenance workshop.

Free storage ashore

Annual berth holders enjoy free storage ashore at any time of year for up to 6 months.

And we'll store your boat cradle free of charge too.

Introduce a friend

Please ask at the marina reception for our current rewards for introducing your friends and family to Fambridge Yacht Haven.

Complimentary Summer Launch Service

7 days a week through the summer season, the newly refurbished Maritime 21 'Devon Lass' will be helmed by the kind volunteers of the North Fambridge Yacht Club between the Visitor Pontoon and swinging moorings.

20% discount on insurance

As a Yacht Haven berth holder, Towergate Insurance offer a 20% discount when you buy or renew a policy, alongside an enhanced range of features and benefits.

Marina Expert – Free berthing tuition

All new berth holders are welcome to half a day's free tuition aboard their own vessel. The marina expert programme can be used to increase confidence coming in to your home berth, retrieving your swinging mooring or to improve best practices when manoeuvring in the marina.

Terms & Conditions apply.



Come and chat to us about becoming a berth holder at the marina office, or call us on **01621 740370**



PROTECTING YOUR PASSION FOR BOATING

with a range of boat insurance benefits for Yacht Havens berth holders

Call Towergate for a quote on: **0344 892 6229**
or visit: www.towergateinsurance.co.uk/yachthavens



Yacht Havens is an Introducer of Towergate Insurance. Towergate Insurance is a trading name of Advisory Insurance Brokers Limited. Registered in England Company No. 4043759. Registered Office: 2 Minster Court, Mincing Lane, London EC3R 7PD. Authorised and regulated by the Financial Conduct Authority. This can be checked on the FCA's register by checking the FCA website at www.fca.org.uk/register or by contacting them on 0800 111 6768.



With 40 years experience in the marine industry look no further when it comes to sales, service, and brokerage. We provide a high-quality service for all of our customers.



Sales@theboatshop.co.uk

**01708-523016
07802-261801
07773-423069**

**Unit 1-4
Fambridge Yacht Station
Ferry Road
N. Fambridge
CM3-6LR**

YAMARIN

SBS TRAILERS

BRIG
RIGID INTELLIGENT BOATS



Berthing options

We're keen to tailor a berthing option that suits your individual needs perfectly.

Our 220 marina berths and 150 deep-water swinging moorings are available on fully flexible terms with daily, seasonal and annual rates on offer.

Check out our standard berthing fees on page 19, or read on to find out about the many alternative berthing packages we offer to suit all budgets and requirements.

Summer at swing and Winter in marina

We offer two popular annual packages that combine the comfort and convenience of alongside pontoon berthing in the shelter of the marina during the colder, winter months, with the freedom and economy of a swinging mooring during the summer.

Package 1 Valet Berth Service

From 1st May to 31st October, enjoy the convenience of 'step on and go' sailing from our 120-metre visitors pontoon. With a minimum of 24 hours' notice during working hours, our team will carefully collect your boat from its secure swinging mooring and bring it safely alongside our super stable pontoon at the Yacht Station, ready for you to load up your stores, step on and go sailing. You can relax in the knowledge that, when not in use, your boat will be safely returned and secured on a swinging mooring at the Yacht Station.

From 1st November to 30th April, you can make the most of fantastic out of season sailing and enjoy more time for maintenance with the greater convenience of your boat being berthed either alongside at the Yacht Station or within our sheltered marina.

Most customers request being placed alongside on a Friday, ready for the weekend.

As an annual valet berth holder you also have the added benefit of free outdoor storage ashore for up to 6 months for your boat whenever you need it.

Package 2 Summer Swing Service

From 1st May to 31st October, enjoy the freedom and economy of our excellent swinging moorings together with full use of our complimentary 7 days a week Summer Launch Service, where we will deliver and collect you, your family and crew to and from your boat during launch operating times.

From 1st November to 30th April, enjoy your boat in even more comfort from the convenience and shelter of one of our superb pontoon berths in the marina. Ideal for sailors taking part in our popular Winter Race Series and for classic yachts of timber construction that require a sheltered winter berth afloat – not allowing the hull to dry out over extended periods ashore.

As a summer swinging mooring holder you have the added benefit of free outdoor storage ashore for your boat whenever you need it.



NEW SERVICE

The popular, complimentary Summer Launch Service is now running 7 days a week through the summer season.

tensile awnings | sails | covers | servicing & repairs



Harwich | Mersea | Hamble

01255 243366 | 01206 384412

sails@dolphin-sails.com | www.dolphinsails.com

Park & launch (Dry Berthing)

Ideal for trailered motorboats and RIBS up to 8m LOA.

We take the hassle out of launching and recovering your boat with our customised tractor, experienced operators, excellent slipways and dedicated pontoon berths. With unlimited launch and recovery on demand, it's a cost effective way to use your boat. We offer daily, monthly, seasonal and annual packages.

Package 1

Annual Park & Launch Service

Take advantage of unlimited launch and recovery of your vessel. You'll feel safe in the knowledge that it's stored ashore on its own trailer when not in use - freeing up your driveway and giving you the option to use your boat year round with access to some great winter fishing.

With a minimum of 24 hours' notice, during office hours, 7 days a week, all year round, we will launch and carefully berth your vessel on a pontoon berth in the marina, ready for you to use.

When you return from your day on the water, simply tie up alongside one of our dedicated pontoon berths, and we'll take care of the rest.

On recovery of your vessel, we will flush the engine with fresh water (using engine muffs), power rinse the hull and trailer with fresh water, re-fit any tailored summer covers and, if you request it, top up your petrol tank with unleaded fuel at pump price less 3p per litre.

This package includes weekend and bank holiday pontoon berthing, and outside storage ashore when your boat is not in use. Most customers request a Friday launch and Monday recovery.

Package 2

Summer Monthly Park & Launch Service

Enjoy all the benefits of our Annual Park & Launch Service with the freedom of paying monthly. Our minimum charging period is 4 months.

Package 3

Daily Casual Launch & Recovery Service

We simply launch and recover your vessel with an experienced owner on board. This service does not include berthing or storage ashore, discounted fuel, fresh water rinse or engine flush.



Tip!

Fambridge Yacht Haven is ideally suited for wakeboarding and water skiing enthusiasts due to our proximity to the South Woodham Ski Club and miles of flat, sheltered water skiing areas.

Plus, The River Crouch is also great for angling.

Don't forget!
Annual berth holders
receive free storage
ashore for up to
6 months at any
time of the year.

Boatyard facilities

With extensive hard standing our boatyard offers both undercover and sheltered, outdoor storage for over 700 boats with all areas serviced with 240v electricity and water. Both facilities have excellent road access for large boat transportation, and are well supported by a range of skilled and experienced businesses capable of providing any maintenance your boat may require.

- 40 & 25 tonne WISE boat hoists
- 30 tonne KATO mobile crane
- 20 tonne VERMEER Yacht Transporter
- 2.5 tonne JCB all terrain forklift
- Massey Ferguson 4WD tractors x2
- 2 x 9m wide slipways for launching
- Storage ashore for over 700 boats
- Trailer storage
- Sheltered mast storage
- Cradle hire
- On-water diesel at the marina, available during office hours
- Unleaded petrol jerry can service at the marina, and diesel jerry can service at Yacht Station
- Bosun's lockers for storing those bulky boating items

Storage ashore

There is space ashore for 700 boats, serviced with power and water. Also, a 500sq/m undercover storage facility provides sheltered, undercover storage for vessels up to 19m LOA. We'll find space for your trailers too.

Slipway Park & Launch

We run a Park & Launch Service suitable for motorboats and RIBs up to 8m. Enjoy unlimited launch and recovery with annual, seasonal and monthly packages. Casual daily launch and recovery also available. Storage ashore and visitor berthing can be provided.

Winter storage

Our boatyard is an extremely popular location for winter storage with boat owners returning year on year from all over the east coast. We also offer winter berthing within our sheltered marina.

Hoisting and lifting

Our hoisting services are available Monday to Friday, with a 24-hour emergency haul out service available all year round.

Shot blasting and dirty work area

All vessels that require hull coatings and antifouls removed must use this dedicated area, allowing your contractor of choice to carry out the work quickly and efficiently.



Red diesel regulations

Red diesel is still available, but recreational boaters must declare and pay the full rate of duty when purchasing fuel for the purposes of propulsion. Fuel used for domestic purposes, such as heating or electricity generation, may be purchased at the reduced rate of duty. Declaration forms are available at the diesel pump. We will offer advice where we can, but it is the responsibility of the purchaser to make a correct declaration at the time of purchase.

"Thank you for your customer care, mechanical expertise and the time that you devoted to me today. There are many managers that would have provided a "useful telephone number" and let me get on with it; but you rolled your sleeves up in this emergency and resolved the problem. Way above and beyond the call of duty. Thank you."

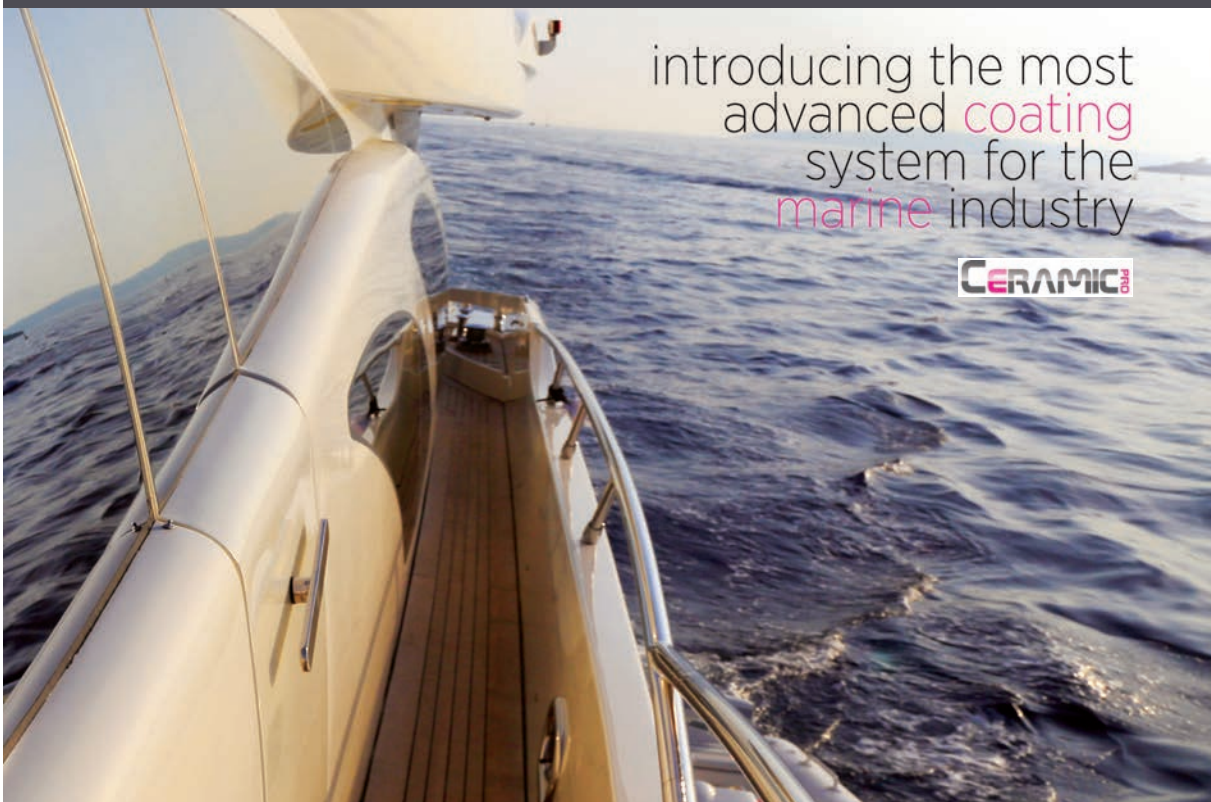
Keith Hudson, m/y Twilight, Berth Holder

BOAT RESTORATION

PROFESSIONAL YACHT DETAILING

introducing the most
advanced **coating**
system for the
marine industry

CERAMIC
PRO



Approved CERAMIC Applicator

- Polishing • Upholstery • Stainless • Bilges
- Teak Decks • Antifoul • Ribs • Detailing • Fully Insured

"Making Leisure Time, Pleasure Time"

ESSEX MARINA WALLSEA ISLAND ROCHFORD SS4 2HF

07810 070371

www.boat-detailing.co.uk boatrestoration@hotmail.com

Other marine services on-site

We're proud of the services we're able to offer you at Fambridge Yacht Haven. And these are complemented by the first-rate services provided by our on-site tenants.

Anodes Direct – a conveniently located chandlery and boat transportation services up to 3.5 tonne vessels.
Tel: 07787 566816

Boatshed Essex – one of the world's largest yacht brokerage groups dealing in used powerboats and yachts.
Tel: 01621 744842

Brookland Marine Ltd – specialist GRP and paint repairs.
Tel: 07927 490189

Dave Oakman Marine Services – well respected marine engineering service provider.
Tel: 07875 293087

Dawnbreaker Yacht Charter – Sea fishing trips and charters.
Tel: 07760 268168

Essex Powerboat School – Powerboat and PWC (personal watercraft) training.
Tel: 07840 942483

Wot-Sup Paddle School – Beginner paddle board lessons and recreational hire at our 7-acre private lake.
Tel: 07967 192264

IBS Boat Supplies – an extensive range of inflatable boat supplies.
Tel: 01621 744250

North Fambridge Yacht Club – a small but extremely friendly club with a popular series of races, rallies and social events throughout the year.

River Breeze Café Bistro – serving yachtsman's breakfasts, light lunches and evening meals with a licensed bar.
Tel: 07443 871549

The Boat Shop – Authorised main dealers for Yamaha, BRIG, BIC Boats, Zodiac, SBS trailers and watersport equipment.
Tel: 01708 523016

The Ferry Boat Inn – now fully open following major refurbishment. This 16th century riverside inn offers a characterful bar with spacious new dining area and landscaped beer garden, self-contained B&B accommodation, a varied and locally-sourced menu, guest beers and good wines.
Tel: 01621 738844

Tip!

We're an Open Site. You're welcome to use your choice of third party contractors.



The Society for Sailing Barge Research – offering fascinating sailing barge records.
Tel: 01375 374786

If there's anything you need, come to the marina office or call us on 01621 740370. Our team have lots of boating and local knowledge – we're here to help you in any way we can.

To keep all our customers and staff safe, we require all contractors to register with us and provide proof of public liability insurance (minimum £5m cover) before they work on-site.

ADM SAILS



Sailing Dinghies, yachts and power boats. ADM Sails provide all sail or cover making services including repairs from our UK sail loft in Maldon, Essex.

With over 25 years experience as a sail maker working in various sail lofts over Essex, gaining a vast experience in both traditional and modern sail and cover production methods.



We provide high quality sails and covers using specialised machinery and only the best quality materials, at very competitive prices and all made in the U.K.



- * Sail making
- * Covers
- * upholstery
- * Sail and cover repairs
- * Sail and cover valet
- * Winter service

Contact details:

01621 851663 07739 097575 andy@admsails.co.uk

www.admsails.co.uk www.facebook.com/admsails

Berthing fees and boatyard rates

Fambridge Yacht Haven welcomes visitors and berth holders alike to the marina. We offer annual, seasonal and daily berthing rates with a range of benefits.

Berthing fees from 1 April 2023

ALL PRICES INCLUDE VAT AT 20%. Minimum chargeable length 8 metres.

Annual berthing

Marina berth	£370 per metre
Marina fingerette berth (max 7m LOA)	£1,573 flat rate
Swinging mooring (Standard)	£169 per metre
Valet Berth Service (Package 1 - see page 11)	£277 per metre
Summer Swing Service (Package 2 - see page 11)	£228 per metre
Mudberth (min 15m LOA)	£154 per metre

Seasonal berthing

Summer marina berth (1 Apr – 31 Oct)	£42 per m / per month
Winter marina berth (1 Nov – 31 Mar)	£34 per m / per month
Summer swinging mooring (1 Apr – 31 Oct)	£34 per m / per month

Visitor berthing

Daily rate, pontoon berth	£3.70 per m / per night
Weekly rate, pontoon berth	£17 per m / per week
Daily rate, swinging mooring	£2.20 per m / per night
Weekly rate, swinging mooring	£12 per m / per week
Swinging mooring holders, berthing on visitors pontoon	£17 flat rate / per night

Park & Launch (see page 13)

Package 1 – Annual	£2,315 per annum
Package 2 – Summer Monthly	£349* per month (min 4 months)
Package 3 – Daily Casual Service	£58 per day
Park & Launch for 'Trailer Sailors'	Add 20% to above costs

Boat lifting charges

Boat lifting (all keel types, inc free pressure wash & blocking off)	£33 per m LOA <12m £34 per m LOA >12m
Mid-season scrub* (lift, pressure wash & launch, charged per ½ hour)	£18 per m LOA <12m £19 per m LOA >12m
*Scrubs not available April/May or Oct/Nov	
Lift & hold for survey (max 1 hour in slings)	1 x Boat Lift Charge
Lift & hold overnight	£39 per m LOA <12m £40 per m LOA >12m
Site move, for boats already ashore (inc cradle hire, if necessary)	½ x Boat Lift Charge

Boatyard storage charges

Storage (undercover – fully enclosed, shared with others)	£12.80 per m / per week
Storage (undercover – fully enclosed, exclusive use)	£38.40 per m / per week
Storage (undercover – fully enclosed, exclusive use)	£10.00 per m / per week
Note 20% discount on undercover storage rates between 1 July and 15 September	
Storage (outside) for annual berth holders	No charge, for up to 6 months
Storage (outside) for visitors / for berth holders after 6 months	£5.10 per m / per week



Marine Products for Maintenance, Repair and Overhaul

With over 12,000 stock lines from over 150 trusted brands

www.asap-supplies.com



Free UK & Ireland Delivery

on orders over £120 (Inc VAT)



Mast storage

Annual berth holders	No charge
Visitors	£69 per season

(For masts stored on racks, please remove spreaders or we can do it for you at standard labour rate)

Other storage

Bosun's stores – 4 cubic metres ^{*1}	£5.10* per week
Bosun's stores – 50 cubic metres ^{*1} (*10% discount if added to your annual berth or swinging mooring)	£165 per month
Trailer storage (trailers must be labelled)	£12 per week

Boatyard services

Pressure washing, light fouling	Included within boat lifting charge
Pressure washing, heavy fouling (pre-wash photos provided)	£6.10 per metre
Cradle hire	£7.20 per week
Shoring up ^{*2} Non 'bilge keeled' sailing vessels over 9m must provide or hire a suitable steel cradle whilst ashore)	No Charge
Re-fuel (diesel only, subject to weather conditions)	£65 + fuel
Removing furling sails prior to haul out	£60 per sail
Boat move, to / from berth or swinging mooring, when laying up	No charge
Boat move, to / from berth or swinging mooring, any other time	£40 per move
Labour rate	£53 per hour
Crane Hire only (for engine lifts) ^{*3} ^{*3} Owner must provide competent engineer	£134 per hour
Mast step/un-step, for vessels <12m LOA ^{*4} ^{*4} Masts made secure only, we recommend a competent rigger checks the rig once re-stepped	£176 per mast
Mast step/un-step, for vessels >12m LOA ^{*5} ^{*5} For vessels >12m LOA, a professional rigger must be instructed by the owner and be present for mast step/un-step	£183 per hour

Electricity

Via your metered lead, including service charge	Please enquire at reception
With no metered lead	Please enquire at reception
Metered leads, to buy	Please enquire at reception

Please note:

< = less than > = greater than

Roller / furling sails must be removed prior to haul out and not refitted prior to launch.

Non 'bilge keeled' sailing vessels must provide or hire a suitable steel cradle whilst ashore.

Engines must not be run whilst boat is ashore.

Maximum beam of vessels to be lifted in hoist is 5 metres and all vessels for storage MUST be pressure washed.

E&OE – Prices subject to change without notice.

If you have specific berthing or boatyard requirements, please speak to our team at the marina office, open seven days a week. VHF Ch 80 or call

01621 740370

BoatshedEssex.com

INTERNATIONAL YACHT BROKERS



Regular Updates

Full-service boat brokerage

We manage a sale or purchase from beginning to end.

20,000 Boats sold so far

We sell more boats than other brokers and we sell them twice as fast.

Global Reach, Local Presence

Boatshed provides a local presence and knowledge to support buyers and new owners with sales and ongoing boat ownership.



Big Data

Matches Buyers with Sellers



Global reach
Local Presence



Sell faster
at higher price



Machine
Learning



We sell more boats than
any other brokers, at higher
prices and faster

Over 1 Million
Registered boat
buyers
300,000
Web visitors per month
70+
Boatshed branches
world-wide

Full Service Brokerage
Organisation



Google VR

Contact Jayne Markham
O: 01621 744842 M: 07773 767524
boats@boatshedessex.com
www.boatshedessex.com



MARKHAM MARINE SERVICES

BOAT TUITION, DELIVERY AND VESSEL MANAGEMENT

Specialising in sailing yachts, power boats and barges, we provide an experienced, personal and professional suite of services, including:

- Tuition and support using and navigating your boat locally and further afield
- Delivering boats to new locations
- Vessel Management Services (including engine servicing and repairs and work on other boat systems)

Get in touch with any query and we'd be glad to help.

Web: www.markhammarineservices.com

Phone: 07941 440846 Email: markhamsiow@gmail.com

Yacht Havens

Marinas for every generation



Your marinas

As custodians of 9 stunning harbours, we're very aware of our responsibility to protect and preserve our marine environments. Working with local communities and berth holders to future-proof our marinas for generations of boating enthusiasts to come.



Your safety

Safety is our No.1 priority. We want you to enjoy everything on offer without putting you or your loved ones at risk. Any questions about safety or accessibility, just ask, we're here to help.

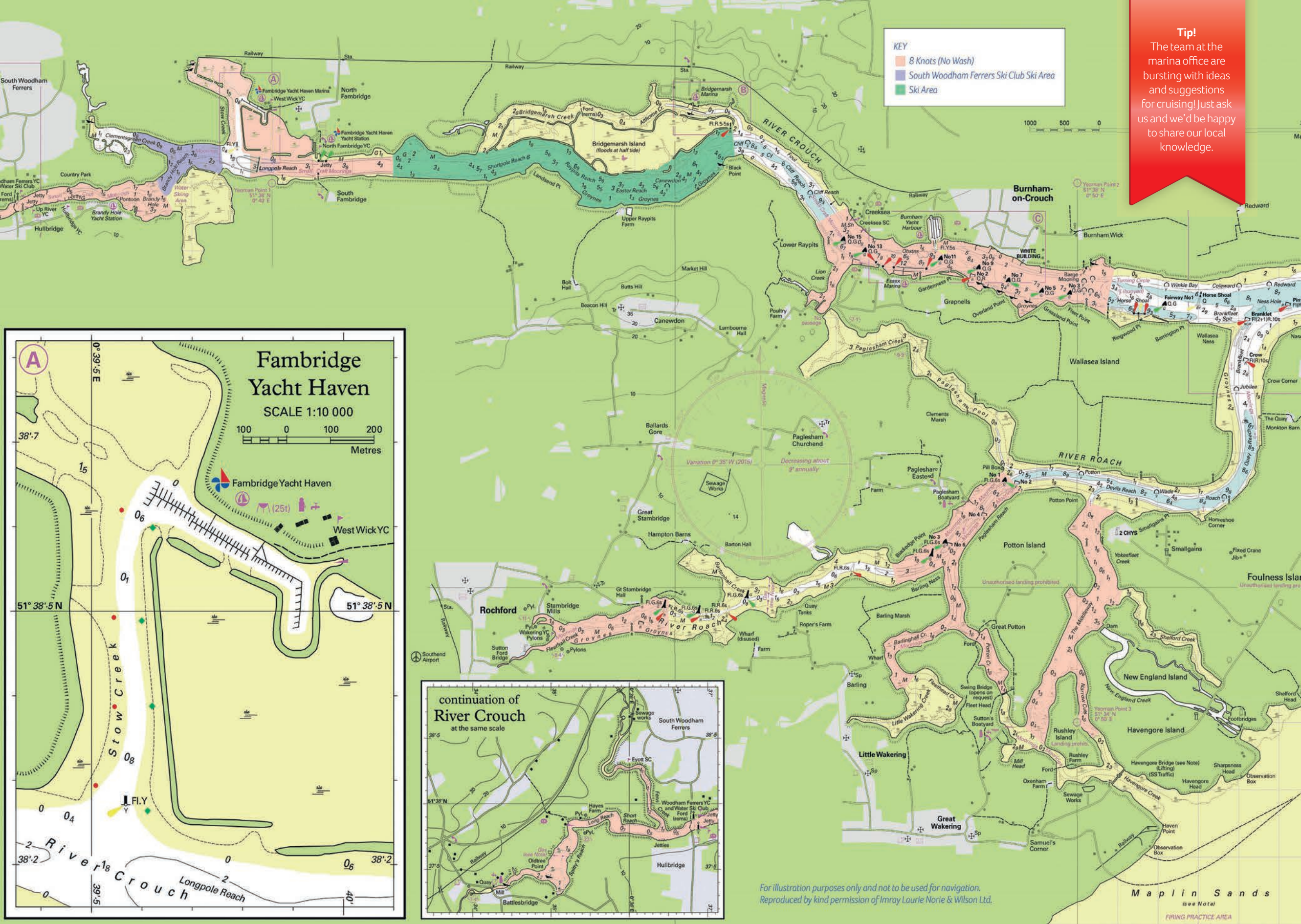
Because we love boating, just like you

Visit yachthavens.com/your-safety for our marina guidelines on how to stay safe, as well as latest news on how we're staying sustainable.

Let's protect, let's reduce. #cleanmarina

"Yacht Haven breathes respect for nature... green in both the literal and figurative sense."

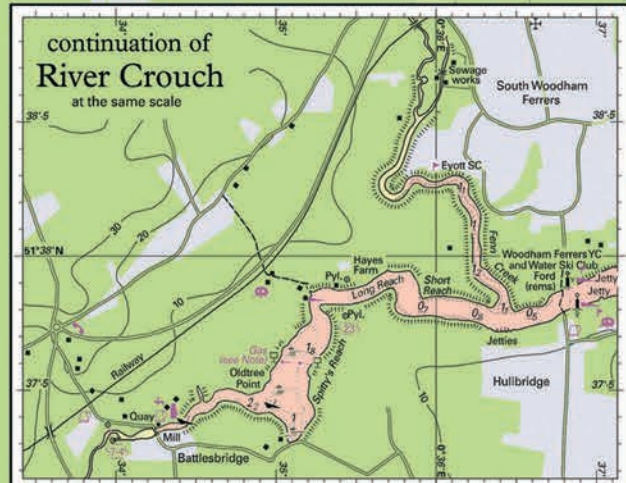
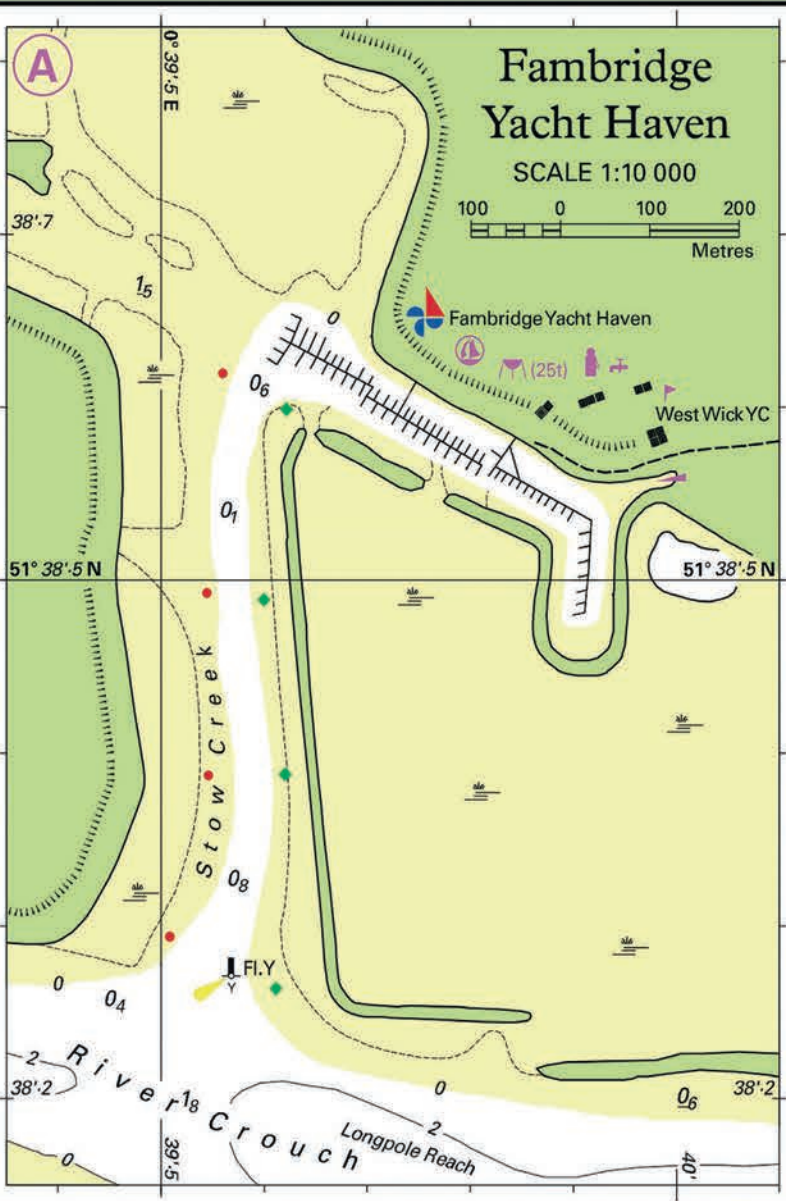
TYHA Gold Anchor Assessor



KEY

- 8 Knots (No Wash)
- South Woodham Ferrers Ski Club Ski Area
- Ski Area

Tip!
The team at the marina office are bursting with ideas and suggestions for cruising! Just ask us and we'd be happy to share our local knowledge.



For illustration purposes only and not to be used for navigation.
Reproduced by kind permission of Imray Laurie Norie & Wilson Ltd.

Maplin Sands
(see Note)
FIRING PRACTICE AREA

Did you know?

One of Europe's largest in-land marinas, Jachthaven Biesbosch in the Netherlands, is part of the Yacht Havens Group?

Cruising Inspiration

Located on the River Crouch, set within beautiful Essex countryside, Fambridge Yacht Haven offers you direct, deep-water access to this beautiful part of the country. You could easily spend the whole summer enjoying everything the east coast river has to offer.

Our favourite cruising spots:

Yokesfleet Creek

Experience one of the best locations in the country for seal watching. Here you'll find some friendly seals who regularly visit the banks of the River Roach. Anchor on the corner of Potton Point next to Devils Reach for the best views.

Osea Island

The River Blackwater offers a deepwater passage to the south of Osea Island. Off the southeast corner of the island you'll find the popular anchorage known as Barnacle. From here, explore the ancient port town of Maldon with its maritime museums and many great local pubs and restaurants.

Battlesbridge

Take a pleasant sail to the head of the River Crouch and discover this hidden gem of a village. There is deepwater to Brandy Hole but further passage to Battlesbridge should be made 1 or 2 hours before high water (depending on draft).

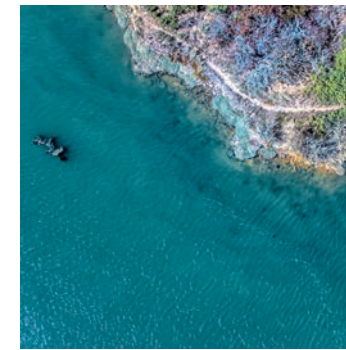
Netherlands

Fambridge is a popular 'final port' for sailors from the UK, wanting to make the trip over to the Netherlands, Belgium and northern France.

The Delta is a collection of waterways that reach the coast in the south west of the Netherlands, and is one of the most popular cruising grounds in Europe.

The collection of stunning rivers provide over 1,000km of waterways to explore that extend through the Netherlands and into Belgium and Germany. Starting in the coastal area, Zeeland, the network of deepwater runs through Brabant and into the stunning Biesbosch National Park.

Sailing through the Netherlands mixes a contrast of peaceful sailing through rivers and vast in-land lakes, and the more challenging sailing around the south western coast.



Our Haven Team love being on the water and love to share their local knowledge. If you're planning to cruise around the River Crouch and beyond, ask us for suggestions.



Don't forget!
Some member marinas are fairly small, advance booking is recommended to avoid disappointment during peak season.

TransEurope benefits

50% off berthing at over 75 prestigious marinas around Europe.

As an annual berth holder at Fambridge Yacht Haven you are automatically a member of the TransEurope Marina network.

Quite simply, this means that you can enjoy 50% visitor berthing discount for up to five days per year at each member marina across Europe.

- All berth holders at Fambridge receive free membership to TransEurope
- Cruise amongst over 75 select marinas across 12 different countries
- 50% off visitor berthing fees for up to 5 days in each destination
- Each marina offers an outstanding level of comfort and service
- Choose from marinas in the UK, Greece, Italy, Spain, France and more



Visit transeuropemarinas.com and sign up at boaters.pickapier.com to request your membership and download the full map for inspiration for your next voyage!

Although correct at the time of printing, membership of TransEurope Marinas is subject to change. To avoid disappointment, boat owners are advised to check the website for the definitive listing.

- 1 Malahide Marina
- 1 Bangor Marina
- 2 Rhu Marina
- 3 Troon Yacht Haven
- 4 Royal Quays Marina
- 5 Whitehaven Marina
- 6 Fleetwood Haven Marina
- 7 Conwy Marina
- 8 Neyland Yacht Haven
- 9 Penarth Marina
- 10 Upton Marina
- 11 Portishead Marina
- 12 Mylor Yacht Harbour
- 13 Mayflower Marina
- 14 Poole Quay Boat Haven
- 15 Buckler's Hard Yacht Harbour
- 16 Town Quay Marina
- 17 Cowes Yacht Haven
- 18 Royal Clarence Marina
- 19 Emsworth Yacht Harbour
- 20 Birdham Pool Marina
- 21 Dover Marina
- 22 Gillingham Marina
- 23 Fambridge Yacht Haven
- 24 Tollesbury Marina
- 25 Fox's Marina
- 26 Brundall Bay Marina
- 27 Hull Marina
- 1 VNZ Blankenberge
- 2 VY Nieuwpoort
- 1 Marina Den Oever
- 2 Jachthaven Waterland
- 3 Jachthaven Wetterwille
- 4 Marina Port Zélande
- 5 Jachthaven Biesbosch
- 6 Delta Marina Kortgene
- 1 Dunkerque
- 2 Calais
- 3 Boulogne-sur-mer
- 4 Saint Valéry sur Somme
- 5 Dieppe
- 6 Saint Valéry en Caux
- 7 Fécamp
- 8 Le Havre Plaisance
- 9 Port-Deauville
- 10 Dives-Cabourg-Houlgate
- 11 Ouistreham/Caen
- 12 Saint-Quay Port d'Armor
- 13 Perros-Guirec
- 14 Roscoff
- 15 Marinas de Brest
- 16 Douarnenez-Tréboul
- 17 Loctudy
- 18 Port la Forêt
- 19 Concarneau
- 20 La Rochelle



Welcome to TransEurope Marinas

TransEurope Marinas is a network of over 75 select marinas in 12 different countries, offering reciprocal berthing benefits for their berth-holders.

A 50% visitors' berthing discount is given for up to 5 days to accredited yachts based in associated marinas.

Visit www.transeuropemarinas.com for Terms & Conditions and a current list of members.

Things to do – at a glance

At the marina

Fambridge Lake, right here at the marina, offers paddle sports, wildlife watching, duck feeding, lakeside decking and a family-friendly picnic area.

Must visit

Within the village, adjacent to the entrance to our Yacht Station you will find the famous Ferry Boat Inn – an excellent traditional village pub with original features dating back beyond 1594, serving great food all year round.

Most visitors to Fambridge Yacht Haven are intrigued by the wildlife surrounding the salt marsh and variety of birds around both sites. Intertidal mud is valuable for the local wildlife, providing abundant food for the oystercatcher, curlew, redshank & black tailed godwit birds. In the river itself you will often see birds such as red-breasted mergansers and cormorants. Seals are occasionally found feeding on the rich fish and invertebrate life of the estuary

and often find their way into our marina.

Fun for the family

South Woodham Ferrers is one stop away on the train heading towards London. Here you will find Marsh Farm Animal Adventure Park.

This is a family fun day out where children can get close to farm animals and play safely in one of their many exciting play areas. There is also a Country Park,

which has excellent coastal walks and superb views of the River Crouch.

A bit of history

A popular place to visit is Maldon, once a very busy ancient port and steeped in maritime history. Have a walk around Hythe Quay and see the huge collection of original Thames Barges and maritime museums, take part in one of the evening 'Ghost walks' or dine in one of the many superb restaurants.

The famous, historic sailing town of Burnham on Crouch is only 15 minutes (or two stops) away on the train heading towards Southminster. Or, depending on how fit you are feeling, a pleasant 3-4 hour walk or 1-2 hour bike ride along the level sea wall from our Yacht Station.

Keep it local

Visit the local towns and villages. Our local train network is bike friendly and we have miles of footpaths and cycle routes to explore.

We're also ideally suited for wakeboarding and water skiing enthusiasts due to our proximity to the South Woodham Ski Club and miles of flat, sheltered water skiing areas.*

The River Crouch is also great for angling, several species regularly being landed.

Something different

Madison Heights Entertainment Centre consists of ten pin bowling, snooker tables, an arcade, bars and restaurants and one of the largest indoor children's play centres in the South East.

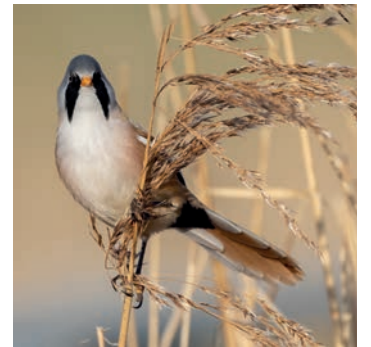
Further afield

Have you ever seen and touched a WW1 fighting aircraft? Visit Stow Maries Great War Aerodrome to explore the early days of British military aviation through award-winning exhibitions and events. It's a great day out for all the family.

Call of the Wild

Visit this local zoo attraction in South Woodham Ferrers. Meet the mischievous Meerkats, Bindi the Binturong and other unusual species! Check callofthewildzoo.co.uk for details.

**For your own safety and the safety of others, all vessels will need suitable third party insurance, you may need a minimum qualification depending on your intentions and a weekly or annual licence will need to be purchased from the Crouch Harbour office either in person or they accept card payments over the telephone (01621 783602).*





Enjoy with Friends

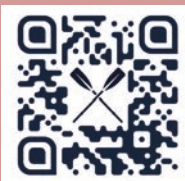
Summer Cocktails - Large Beer Garden
Locally Sourced Menu - Riverside Walks
Open 7 days a week - Dog Friendly!

BOOK NOW at ferryboatinnsex.com
or call **01621 738844**

VISITING BY BOAT?

Berthing available at Fambridge Yacht Haven

Scan to view
our menus
online



Ferry Boat Inn
Ferry Road
North Fambridge
Essex
CM3 6LR

Eat, drink and stay

When it comes to finding a bite to eat, you're assured of a warm welcome in North Fambridge, with the charming Ferry Boat Inn just a stone's-throw from the marina and the River Breeze café at the Yacht Haven.

The Ferry Boat Inn
at North Fambridge
ferryboatinnsex.com
01621 738844

The historic Ferry Boat Inn is full of character and sits on the north bank of the River Crouch in the delightful village of North Fambridge. Recently restored from top to bottom, it re-opened in 2021. Keeping all the originality of this 16th century listed building, with wood burning stoves and exposed timber frame, there's a new kitchen, a new cellar and bar, and a stunning new barn extension, offering a modern dining experience throughout.

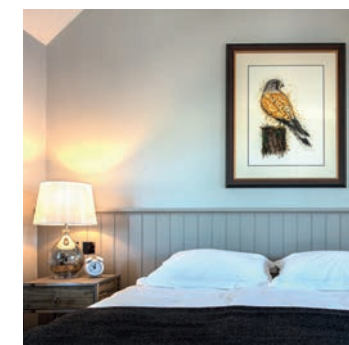
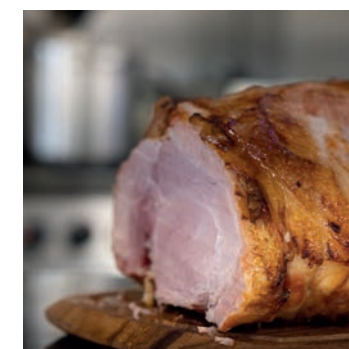
Open all-year round, it's the perfect destination for a delicious lunch or evening meal, to settle in for a Sunday roast or drop in for a drink at the bar. With great food, beers and wines, it's there to tempt you inside for a full dining experience, or just a break from the day to enjoy a freshly brewed latte and the newspaper after tinkering on your boat or following a brisk walk along the river.

If you're looking for a comfortable bed at the end of the day, there are six B&B rooms set in the courtyard to the rear of the inn, all lovingly refurbished

with king-sized beds and fully equipped ensembles, each room with its own Smart TV, Alexa, tea and coffee making facilities, and complimentary WiFi. There is ample free car parking.

River Breeze Café & Bar
at Fambridge Yacht Haven
07443 871549

Overlooking the marina at Fambridge Yacht Haven, the newly refurbished Café & Bar serves all day breakfasts, sandwiches, and a choice menu for lunch and dinner, including home-cooked specials at the weekend and roasts on Sunday. Family and dog friendly. Free parking. Open 6 days a week (closed Mondays).



Tip!

If approaching at night, our 120-metre visitor pontoon is easily visible with two single, green flashing navigation lights, one at either end (FL(3)G.4s).

Don't forget!

At night 'Stow Post' is lit with a single flashing yellow light (QF(4)Y.8s).

Finding Fambridge

Located on the north bank of the River Crouch, North Fambridge is about 6nm upriver from Burnham on Crouch. The marina is set within Stow Creek where access can be gained at all states of the tide depending on vessel draft.

Latitude

51° 38' 34.0" N

Longitude

0° 39' 49.3" E

Church Road, North Fambridge
Nr Chelmsford, Essex CM3 6LU
VHF Ch 80
01621 740370 (Marina)
01621 742911 (Yacht Station)

By sea

- Approaching from seaward, pass through Burnham Fairway on the south bank of the river passing Essex Marina and the commercial Baltic Wharf at Wallasea Island to your port side. The river is deep and wide right up to North Fambridge, but be aware that Bridgemarsh Island, a very large area of flooded marshland on the north (starboard) side of the main river channel, can be partially submerged on very high tides.
- Approaching North Fambridge you'll see our Yacht Station and neatly laid mid-river moorings ahead of you, our 120-metre visitor pontoon on your starboard side and South Fambridge on your port side.
- To come into the marina, pass our swinging moorings (keeping towards the south side of the river, as traffic may be busy around our visitor pontoon on the north side) and continue upriver for

another half-mile where you will see a single special mark known as 'Stow Post' in the mouth of Stow Creek on your starboard side. Enter the creek leaving Stow Post to port and keep within the buoyed channel leading towards our marina on the starboard side.

- The River Crouch and approaches are well marked with lit channel markers as far as Baltic Wharf at Wallasea Island. Upriver of Baltic Wharf is not lit for approximately 5nm until you reach our visitor pontoon and Stow Post.

By road

- North Fambridge is only 30 minutes driving distance from the M25, making it one of the closest marinas to London. From the M25 take the A12 towards Chelmsford.

- From the A12 take the A130 towards South Woodham Ferrers. From there, follow signs to Burnham on Crouch, Fambridge Yacht Haven is roughly half way between South Woodham and Burnham – signposted 'Marina' with black and white signs as you approach North Fambridge. Pass through the village, please observing the speed limits, turn left towards the river for the Yacht Station or carry straight on past the 'dead end' sign following signs towards the marina passing through our white gates.
- Postcode for your sat nav: CM3 6LU

Need help with directions?

Call our friendly and knowledgeable team on VHF Ch 80 or 01621 740370. We'll guide you in.

P.J.DOWNS AND SONS

Established in 1979. Here at P J Downs & Sons we run a small family-run business, based in Langford, Essex offering transport of all types of marine craft for work and leisure.

Contact us on:

07521 284542

peterdownsandsons@gmail.com

Website:

www.pjdownsandsons.co.uk

"Don't hire one, you said – borrow one, you said – it's cheaper, you said"

Send for our FREE info pack and depot list
01621 784858
www.liferafts.com
info@liferafts.com
LIFERAFT & DINGHY SERVICING
Liferaft House
Burnham-on-Crouch
Essex. CM0 8TE

Check our hire rates - from 4 days to 3 years - on rafts from 4 to 14 persons

PREMIUM LIFERAFT SERVICES
THE LIFERAFT HIRE COMPANY

David Oakman Marine Engineering

Outboards and Inboards

Servicing, Repairs and Maintenance

Electrical work undertaken

07875 293087 / 01621 782427
david_oakman@yahoo.com

River Breeze Café & Bar

Fambridge Yacht Haven • North Fambridge

07443 871549

A pleasant run family business, open to all and everyone is welcome.

Good food and home cooked Sunday Roast

Specials every Friday and Saturday evenings, Heated Marquee available for private function's if required, reasonable Bar prices and open 6 days a week.

Opening times

Monday Closed

Tuesday, Wednesday, Thursday 10.30am – 2pm reopens 5pm onwards

Friday 10.30am onwards

Saturday, Sunday 9am onwards



Please check out our Facebook page River Breeze Café Bar for all our up and coming events

Finding Fambridge ...continued

By rail

Fambridge is on the main Network South East line and has an hourly service to London Liverpool Street. Some services are direct, others stop frequently along the way at towns including Wickford (change here for London Southend Airport), Shenfield, Brentwood, Romford and Stratford.

National Rail Enquires –
03457 484950.

By air

Stansted Airport is just over an hour away by car and London Southend Airport is approximately 45 minutes. With its dedicated station, it's very easy to catch a train from London Southend Airport to North Fambridge. Both airports offer low-cost, direct flights to many UK and overseas destinations.

Speed Limits

There is a new 'no wash' rule when passing through river moorings and our marina.

Please observe the 8 Knot speed limit through Burnham, past Wallasea Island to Creeksea and whilst passing through river moorings. The speed limits on the Crouch and Roach are clearly marked on buoys. Please navigate at a slow speed (below 4 knots) at all times within Stow Creek and our marina.

Crouch Harbour Authority

All of the Rivers Crouch and Roach are within the jurisdiction of the Crouch Harbour Authority at Harbour Office, The Quay, Burnham on Crouch, Essex CM0 8AS, 01621 783602, info@crouchharbour.org.uk, www.crouchharbour.org.uk

Harbour Dues are payable on all boats based on the rivers Crouch and Roach. Visiting boats staying for up to 14 nights are exempt. Harbour Dues (licences) can be purchased at the Harbour Masters office in person or they accept card payments over the telephone (01621 783602). The schedule of dues is displayed on the CHA website (www.crouchharbour.org.uk).

As a guide, annual harbour dues range between £40.50 and £265 depending on vessel length.

Water skiing, personal water craft

Water skiing and use of Personal Water Craft (PWC) is permitted in designated areas of River Crouch both upriver and downriver of North Fambridge, but nowhere on the River Roach. Ski boats/ PWC must be registered with the Harbour Authority's agent who will check the suitability of the vessel, insurance cover and ski boat driver certification. A registration fee is payable. Use of Ski boats/PWC without registration or in breach of CHA requirements is an offence and can result in a fine.



Follow us on Facebook and Twitter for news and weather updates.



Useful contacts

FAMBRIDGE YACHT HAVEN

Church Road, North Fambridge,
Nr Chelmsford, Essex CM3 6LU
VHF: Channel 80
01621 740370 (Marina)
01621 742911 (Yacht Station)
www.yachthavens.com/fambridge

YACHT CLUBS

North Fambridge Yacht Club
Enquiries via Marina Reception
West Wick Yacht Club
admin@ww-yc.co.uk

MARITIME INFORMATION / SAFETY

HM Coastguard
01255 675518
Susan Harrison
(Crouch Harbour Authority)
01621 783602

PUBLIC SERVICES

Essex Police
01245 491491
Essex County Council
0345 743 0430
Maldon District Council
01621 854477
Maldon Tourist Information
01621 856503
Chelmsford Tourist Information
01245 606279
Southend Tourist Information
01702 618747

CASUALTY

Broomfield, Chelmsford
01245 362000

DOCTORS

Blackwater Medical Centre,
Maldon
01621 876760
The Burnham Surgery,
Burnham On Crouch
01621 727600
The Woodham Surgery,
South Woodham Ferrers
01245 318300

DENTISTS

Maldon Dental Practice
01621 850312
Burnham Dental Practice
01621 782644
Brickfields Dental Care
01245 328060

TRAVEL

First Essex (Bus)
0871 200 2233
Community Link (Bus)
0345 603 7631
National Rail Enquires
03457 48 49 50
London Stansted Airport
0844 335 1803
London Southend Airport
01702 538500
Banyards (Taxi)
01621 850850

Arrow Cabs (Taxi)

01621 855111
Ace Cabs (Taxi)
01621 855596
CM3 Cars
(Minicab & Courier Service)
01245 328818

INSURANCE

Towergate Insurance
0344 892 6229

YACHT SALES & BROKERAGE

Boatshed Essex
01621 744842

BOAT TRANSPORT

John Stephenson
07787 566816
P J Downs and Sons
07521 284542
Squirrel Marine
07446 821333

MARINE SERVICES

Anodes Direct
07787 566816
The Boat Shop WW Ltd
01708 523016 / 01708 559139
Markham Marine Service
Boat delivery (not transport)
& tuition
07941 440846

Nautitech Marine Service

Marine Technician, Simon Roystone
07742 860517 / 01277 514898
Swift Marine Service
Martin 07930 901774
Marine Store
01621 874494
Maldon Chandlers
01621 854280

ENGINEERS

Dave Oakman Marine Services
07875 293087
Volspec
01621 869756

SAILING SCHOOL/CHARTER

Dawnbreaker Yacht Charters
07760 268168
Essex Powerboat School
07840 942483
Wot-Sup Paddle Board School
Lessons/socials/hire
Jay 07967 192264
Zoe 07711 110577

YACHT RIGGER

DRS Rigging
01621 784716 / 07796 032564
GRP repairs
Brookland Marine Ltd
(Robert Stockwell)
07927 490189
Marine surveyors
Toby Lester
07935 326656
Joe Kershaw
07770 520737
Amazon Marine
07970 733546

LIFERAFTS

Premium Liferrafts
01621 784858

FOOD & DRINK

The Ferry Boat Inn,
North Fambridge
01621 738844
River Breeze Café Bistro,
North Fambridge
07443 871549

If there is anything at all you need, or think we can help you with, please ask us. We have lots of local knowledge, and we're here to make your stay as happy and safe as possible.

A quiet, friendly holiday park with 12 month leisure licenced, 180 fully serviced pitches in a country park, adjacent to the boatyard and river.

Imagine returning after a pleasurable day's sailing on the River Crouch in Essex to your very own luxury holiday lodge, just in time for dinner, a cool glass of wine (or two!), and, of course, the company of cherished loved ones and friends

And imagine being able to do all that at comfortable accommodation that's ideally positioned – in close proximity to the boatyard and waterway.

**At Rice & Cole Boatyard
and Sea End Caravan Park in
Burnham on Crouch,
you can.**

The town's just a short stroll away


Burnham is a charming river town and a celebrated yachting centre, second only to Cowes.

What's more, it's home to both the Royal Corinthian Yacht Club and the Royal Burnham Yacht Club, and can boast an eclectic selection of shops, restaurants and pubs.

We have various Caravans for Sale on the Park and these come with Packages so please ask for Further details.

Static Caravan Finance

 TRUSTPILOT 

In partnership with
PEGASUS 

**Why not spread
the cost of your
holiday home?**

Working in partnership with Pegasus Finance, a leading UK finance broker, we are offering flexible and affordable finance options to customers wishing to purchase their dream holiday home. You find the perfect option to suit your needs, we'll make the process of purchasing it affordable and stress free

A safe and peaceful environment, where there's plenty of space for all

At Sea End Caravan Park, we offer 180 fully serviced pitches for owner-occupied caravan holiday homes, with our site rental charge being highly competitive.

Look forward to a welcome break away from the stress and strain of town or city life, at a quiet and secluded holiday location in a park-like setting adjacent to the River Crouch.

You and your family really can relax and feel protected here, too, thanks to our park warden who resides on site and are available during office hours for the supply of gas, general enquiries, and to provide a safe and secure environment for our caravan owners.



MONTE CARLO PARKS
Making a difference in Park Home Living

Rice & Cole Limited is a wholly owned subsidiary and group company of Monte Carlo Parks Limited.

Sea End Boathouse,
Burnham On Crouch,
Essex CM0 8AN

Telephone:
+ 44 (0)3301 331259

Email:
ks.co.uk

leigh@montecarlo-parks.co.uk

Visit our website: www.riceandcole.co.uk

Times and heights of high and low waters at North Fambridge, Essex GMT/BST

January				February				March			
	Time	m		Time	m		Time	m		Time	m
1	0132	1.27	16	0612	4.54	1	0315	1.22	16	0052	1.17
	0738	4.62		1246	0.78		0917	4.26		0703	4.14
Su	1425	0.62	M	1854	4.38	W	1556	1.16	Th	1333	1.30
	2028	4.55					2207	4.27		1953	3.87
2	0244	1.24	17	0114	1.32	2	0448	1.06	17	0224	1.24
	0850	4.57		0717	4.48		1032	4.38		0837	3.99
M	1535	0.75	Tu	1403	0.82	Th	1712	1.14	F	1512	1.40
	2137	4.58		2011	4.39		2309	4.46		2130	3.96
3	0359	1.14	18	0248	1.23	3	0553	0.82	18	0423	1.09
	0958	4.61		0836	4.51		1132	4.57		1009	4.17
Tu	1640	0.85	W	1525	0.80	F	1803	1.06	Sa	1733	0.81
	2238	4.66		2129	4.50					2341	4.76
4	0508	0.98	19	0409	1.03	4	0000	4.66	19	0618	0.38
	1057	4.71		0956	4.68		0639	0.62		1206	5.20
W	1734	0.90	Th	1638	0.75	Sa	1218	4.73	Su	1830	0.70
	2329	4.77		2243	4.70		1842	0.98			
5	0604	0.79	20	0521	0.78	5	0041	4.82	20	0037	5.09
	1147	4.81		1109	4.95		0716	0.48		0711	0.11
Th	1817	0.91	F	1743	0.70	Su	1257	4.85	M	1259	5.48
				2349	4.91	☾	1914	0.91	●	1918	0.62
6	0014	4.86	21	0623	0.52	6	0117	4.95	21	0124	5.37
	0649	0.63		1211	5.24		0746	0.39		0757	-0.09
F	1229	4.90	Sa	1839	0.66	M	1333	4.95	Tu	1345	5.63
☾	1854	0.90	●				1942	0.85		1958	0.56
7	0054	4.94	22	0045	5.11	7	0150	5.06	22	0208	5.57
	0728	0.52		0719	0.28		0812	0.33		0837	-0.19
Sa	1309	4.96	Su	1306	5.48	Tu	1405	5.02	W	1427	5.65
	1927	0.89		1928	0.64		2008	0.79		2037	0.55
8	0130	4.99	23	0136	5.29	8	0221	5.13	23	0247	5.67
	0801	0.46		0806	0.09		0838	0.28		0912	-0.18
Su	1346	5.00	M	1356	5.63	W	1436	5.04	Th	1508	5.53
	1957	0.90		2012	0.64		2034	0.74		2112	0.57
9	0204	5.02	24	0222	5.42	9	0251	5.15	24	0323	5.64
	0830	0.44		0852	-0.04		0905	0.27		0946	-0.05
M	1421	4.99	Tu	1442	5.66	Th	1506	5.01	F	1546	5.31
	2023	0.90		2052	0.67		2101	0.73		2146	0.63
10	0236	5.03	25	0305	5.48	10	0320	5.11	25	0358	5.49
	0857	0.43		0932	-0.08		0931	0.30		1017	0.15
Tu	1453	4.95	W	1526	5.55	F	1535	4.93	Sa	1624	5.01
	2049	0.90		2131	0.73		2130	0.77		2221	0.72
11	0306	4.99	26	0346	5.45	11	0347	5.04	26	0433	5.23
	0925	0.43		1012	-0.03		0957	0.37		1048	0.41
W	1525	4.87	Th	1610	5.32	Sa	1605	4.83	Su	1702	4.68
	2118	0.92		2209	0.81		2200	0.84		2258	0.85
12	0338	4.91	27	0425	5.33	12	0417	4.97	27	0511	4.89
	0954	0.46		1051	0.11		1026	0.47		1127	0.71
Th	1556	4.76	F	1654	5.03	Su	1638	4.72	M	1743	4.34
	2149	0.98		2250	0.92		2234	0.93	☾	2346	1.01
13	0408	4.81	28	0505	5.13	13	0451	4.89	28	0558	4.50
	1026	0.53		1133	0.32		1101	0.59		1218	1.03
F	1629	4.65	Sa	1739	4.73	M	1718	4.58	Tu	1838	4.05
	2223	1.07		2336	1.05	☾	2319	1.04			
14	0442	4.72	29	0551	4.86	14	0535	4.75	14	0429	5.00
	1102	0.61		1221	0.57		1153	0.77		1030	0.61
Sa	1707	4.55	Su	1832	4.45	Tu	1811	4.37	Tu	1652	4.57
	2303	1.18								2256	0.87
15	0521	4.63	30	0036	1.17	15	0027	1.16	15	0513	4.78
	1146	0.70		0644	4.57		0634	4.52		1122	0.88
Su	1754	4.46	M	1319	0.83	W	1314	0.95	W	1741	4.28
☾	2357	1.28		1934	4.24		1925	4.18	☾		
			31	0148	1.24						
				0755	4.33						
			Tu	1431	1.05						
				2050	4.17						
									</		

*These tables have been adjusted for BST. Chart Datum: 2.35m below Ordnance Datum (Newlyn)
Tides computed by POLTIPS software developed at the National Oceanography Centre*

Fambridge Tide Tables 2023

Times and heights of high and low waters at North Fambridge, Essex GMT/BST

April			May			June		
Time	m		Time	m		Time	m	
1 0431 1.09 Sa 1705 1.37 2303 4.08			16 0424 0.63 Su 1027 4.62 2303 4.47			1 0449 0.83 M 1717 1.21 2303 4.32		
2 0552 0.83 Su 1805 1.15			17 0546 0.36 M 1759 0.85			2 0547 0.64 Tu 1806 1.01 2356 4.61		
3 0001 4.41 M 1227 4.65 1849 0.96			18 0005 4.89 Tu 1235 5.24 1851 0.71			3 0631 0.49 W 1847 0.85		
4 0045 4.69 Tu 1307 4.82 1924 0.82			19 0056 5.21 W 1322 5.35 1936 0.59			4 0038 4.85 Th 1302 4.91 1924 0.73		
5 0122 4.91 W 1340 4.95 1955 0.71			20 0139 5.44 Th 1403 5.39 2017 0.48			5 0116 5.04 F 1338 5.04 1959 0.63		
6 0156 5.09 Th 1412 5.06 2024 0.62			21 0218 5.57 F 1442 5.37 2056 0.40			6 0155 5.21 Sa 1416 5.13 2034 0.55		
7 0228 5.23 F 1445 5.13 2054 0.55			22 0255 5.61 Sa 0918 0.15 1518 5.29 2130 0.39			7 0233 5.33 Su 0845 0.32 1454 5.15 2107 0.49		
8 0301 5.32 Sa 0912 0.20 1517 5.15 2123 0.52			23 0330 5.53 Su 0946 0.33 1552 5.13 2205 0.44			8 0310 5.38 M 0914 0.38 1532 5.09 2142 0.47		
9 0333 5.33 Su 0937 0.25 1550 5.08 2154 0.53			24 0404 5.34 M 1012 0.54 1624 4.90 2235 0.52			9 0350 5.34 Tu 0947 0.50 1610 4.95 2219 0.48		
10 0404 5.28 M 1004 0.36 1622 4.94 2225 0.57			25 0438 5.07 Tu 1037 0.75 1654 4.66 2306 0.63			10 0429 5.22 W 1025 0.69 1649 4.74 2301 0.52		
11 0438 5.17 Tu 1034 0.52 1657 4.75 2302 0.64			26 0514 4.74 W 1108 0.98 1727 4.39 2343 0.77			11 0512 5.01 Th 1111 0.93 1734 4.50 2356 0.59		
12 0516 5.00 W 1113 0.77 1736 4.49 2350 0.75			27 0556 4.37 Th 1149 1.24 1813 4.11			12 0604 4.76 F 1216 1.15 1832 4.29		
13 0604 4.72 Th 1211 1.07 1829 4.18			28 0033 0.93 F 0655 4.05 1257 1.49 1918 3.88			13 0113 0.63 Sa 0715 4.56 1345 1.24 1950 4.23		
14 0102 0.86 F 0709 4.42 1349 1.27 1950 3.95			29 0150 1.06 Sa 0814 3.92 1440 1.57 2039 3.86			14 0241 0.56 Su 0840 4.58 1511 1.18 2114 4.37		
15 0246 0.84 Sa 0847 4.33 1533 1.21 2137 4.07			30 0328 1.02 Su 0936 4.05 1612 1.43 2156 4.04			15 0404 0.42 M 1002 4.76 1625 1.05 2229 4.65		
						31 0446 0.71 W 1038 4.46 1716 1.13 2256 4.55		

These tables have been adjusted for BST. Chart Datum: 2.35m below Ordnance Datum (Newlyn)
Tides computed by POLTIPS software developed at the National Oceanography Centre

Fambridge Tide Tables 2023

Times and heights of high and low waters at North Fambridge, Essex GMT/BST

July			August			September		
Time	m		Time	m		Time	m	
1 0546 0.71 Sa 1822 0.89			16 0026 4.83 Su 0704 0.97 1300 4.80 1936 0.67			1 0221 5.74 F 0837 0.63 1445 5.66 2114 -0.09		
2 0005 4.90 Su 1241 4.89 1916 0.70			17 0116 4.93 M 0745 0.96 1345 4.90 2020 0.53			2 0305 5.80 Sa 0916 0.60 1525 5.82 2152 -0.10		
3 0103 5.13 M 0731 0.66 1336 5.04 2007 0.52			18 0200 5.00 Tu 0820 0.94 1424 4.98 2056 0.46			3 0346 5.73 Su 0953 0.60 1603 5.84 2227 0.00		
4 0156 5.34 Tu 1427 5.16 2055 0.35			19 0239 5.05 W 0852 0.92 1459 5.04 2126 0.44			4 0425 5.53 M 1028 0.64 1638 5.73 2300 0.21		
5 0246 5.51 W 0901 0.66 1514 5.25 2140 0.21			20 0314 5.05 Th 0920 0.92 1532 5.07 2154 0.44			5 0503 5.24 Tu 1104 0.72 1714 5.49 2332 0.49		
6 0333 5.60 Th 0943 0.70 1600 5.30 2225 0.12			21 0349 5.02 F 0946 0.91 1603 5.07 2220 0.45			6 0541 4.89 Su 1143 0.84 1753 5.16		
7 0420 5.56 F 1025 0.76 1643 5.29 2308 0.09			22 0420 4.94 Sa 1012 0.92 1633 5.02 2247 0.47			7 0008 0.80 Th 0623 4.54 1229 0.99 1839 4.76		
8 0505 5.42 Sa 1108 0.85 1727 5.24 2355 0.12			23 0451 4.82 Su 1041 0.96 1703 4.92 2316 0.53			8 0057 1.14 F 0716 4.21 1331 1.15 1943 4.38		
9 0554 5.20 Su 1155 0.96 1813 5.15			24 0521 4.69 M 1113 1.04 1734 4.81 2348 0.64			9 0209 1.43 Sa 0831 4.00 1456 1.25 2115 4.21		
10 0046 0.22 M 0645 4.97 1248 1.05 1902 5.03			25 0554 4.56 Tu 1149 1.15 1809 4.71			10 0350 1.54 Su 1008 4.07 1657 1.15 2249 4.38		
11 0143 0.36 Tu 0742 4.76 1351 1.13 1959 4.87			26 0025 0.76 W 0634 4.44 1233 1.27 1852 4.59			11 0530 1.43 M 1126 4.36 1817 0.88 2356 4.67		
12 0244 0.53 W 0846 4.61 1501 1.15 2105 4.74			27 0115 0.89 Th 0727 4.34 1340 1.36 1950 4.49			12 0629 1.24 Tu 1222 4.66 1906 0.66		
13 0352 0.72 Th 0956 4.55 1616 1.12 2219 4.68			28 0228 0.98 F 0839 4.29 1513 1.34 2104 4.45			13 0045 4.90 Sa 0709 1.09 1306 4.89 1942 0.52		
14 0505 0.87 F 1106 4.59 1734 1.01 2328 4.73			29 0357 1.00 Sa 0958 4.36 1642 1.17 2226 4.56			14 0124 5.04 Th 0742 0.97 1341 5.06 2011 0.44		
15 0611 0.95 Sa 1208 4.69 1843 0.84			30 0516 0.94 Su 1117 4.54 1758 0.92 2343 4.82			15 0158 5.12 F 0811 0.88 1414 5.19 2037 0.40		
			31 0623 0.85 M 1226 4.78 1903 0.66			31 0134 5.55 Th 0756 0.71 1401 5.41 2034 0.04		

These tables have been adjusted for BST. Chart Datum: 2.35m below Ordnance Datum (Newlyn)
Tides computed by POLTIPS software developed at the National Oceanography Centre

Fambridge Tide Tables 2023

Times and heights of high and low waters at North Fambridge, Essex GMT/BST

October			November			December		
Time	m		Time	m		Time	m	
1 0242 5.74			1 0231 5.33			1 0244 5.02		
Su 0854 0.53			W 0849 0.48		Th 0825 0.59	F 0910 0.53		16 0240 5.15
1458 5.87		M 1442 5.34	1445 5.51		1426 5.34	F 1503 5.06	Sa 0901 0.36	1501 5.38
2125 0.02		2056 0.45	2057 0.70		2025 0.70	2104 1.05	2059 0.83	
2 0320 5.64		17 0257 5.24	2 0305 5.09		17 0246 5.08	2 0317 4.83		17 0322 5.05
M 0931 0.51		0909 0.68	0923 0.57		0859 0.58	0941 0.62	Su 0945 0.34	0945 0.34
1535 5.85		Tu 1512 5.35	Th 1520 5.22		F 1505 5.25	Sa 1540 4.80	Su 1544 5.26	
2157 0.20		2119 0.51	2124 0.95		2100 0.84	2133 1.18	2144 0.95	
3 0358 5.44		18 0328 5.18	3 0337 4.81		18 0323 4.90	3 0349 4.64		18 0405 4.93
1007 0.55		0938 0.69	0957 0.69		0939 0.61	1016 0.71	M 1033 0.35	1033 0.35
Tu 1611 5.68		W 1544 5.30	F 1558 4.88		Sa 1546 5.10	Su 1620 4.53	M 1632 5.08	
2225 0.45		2144 0.61	2154 1.18		2142 1.04	2208 1.33	2234 1.09	
4 0433 5.16		19 0401 5.05	4 0410 4.53		19 0403 4.68	4 0427 4.44		19 0453 4.81
1041 0.63		1009 0.72	1034 0.83		1028 0.66	1055 0.80	Tu 1129 0.37	1129 0.37
W 1645 5.40		Th 1617 5.20	Sa 1641 4.50		Su 1634 4.88	M 1707 4.29	Tu 1726 4.89	
2254 0.74		2212 0.76	2234 1.43		2237 1.25	2254 1.48	2333 1.20	
5 0506 4.83		20 0433 4.87	5 0451 4.23		20 0454 4.45	5 0515 4.25		20 0547 4.72
1116 0.75		1042 0.78	1123 0.98		1133 0.70	1148 0.90	W 1233 0.40	1233 0.40
Th 1722 5.03		F 1653 5.05	Su 1739 4.17		M 1733 4.68	Tu 1806 4.13	W 1829 4.74	
2326 1.04		2246 0.97	2336 1.66		2353 1.39	2354 1.63		
6 0543 4.49		21 0508 4.64	6 0556 3.98		21 0601 4.32	6 0618 4.11		21 0043 1.25
1157 0.91		1124 0.87	1233 1.10		1256 0.66	1256 0.97	Th 1341 0.43	0650 4.68
F 1806 4.60		Sa 1736 4.82	M 1858 4.04		Tu 1852 4.61	W 1911 4.10	1939 4.68	
		2335 1.24						
7 0011 1.36		22 0554 4.35	7 0111 1.77		22 0122 1.37	7 0125 1.67		22 0158 1.22
Sa 0629 4.14		Su 1228 0.97	0717 3.92		0724 4.37	0724 4.11	F 0800 4.68	0800 4.68
1254 1.09		1834 4.56	Tu 1404 1.10		W 1415 0.54	Th 1411 0.96	F 1450 4.49	1450 4.49
1909 4.21			2017 4.15		2014 4.75	2014 4.20	2050 4.70	
8 0124 1.64		23 0059 1.47	8 0247 1.66		23 0241 1.24	8 0251 1.55		23 0309 1.14
0743 3.89		M 0703 4.08	0837 4.07		0842 4.59	0828 4.21	Sa 0913 4.75	0913 4.75
Su 1416 1.22		1403 0.97	W 1526 0.96		Th 1530 0.42	F 1518 0.89	Sa 1558 0.58	1558 0.58
2042 4.07		1959 4.42	2127 4.40		2128 4.95	2115 4.37	2159 4.78	
9 0308 1.73		24 0251 1.45	9 0358 1.43		24 0349 1.08	9 0355 1.35		24 0419 1.01
0920 3.91		0849 4.09	0944 4.34		0951 4.88	0929 4.40	Su 1019 4.86	1019 4.86
M 1609 1.15		Tu 1540 0.78	Th 1628 0.78		F 1636 0.34	Sa 1616 0.80	Su 1700 0.67	1700 0.67
2215 4.28		2143 4.66	2222 4.65		2230 5.14	2209 4.58	2259 4.88	
10 0446 1.57		25 0415 1.25	10 0450 1.21		25 0449 0.93	10 0448 1.15		25 0523 0.84
1046 4.20		1019 4.45	1036 4.61		1050 5.13	1026 4.62	M 1117 4.99	1117 4.99
Tu 1736 0.91		W 1701 0.51	F 1714 0.65		Sa 1730 0.34	Su 1705 0.73	M 1753 0.74	1753 0.74
2322 4.59		2259 5.04	2305 4.84		2323 5.25	2259 4.78	2351 4.96	
11 0550 1.33		26 0523 1.03	11 0533 1.02		26 0543 0.77	11 0535 0.96		26 0620 0.66
1145 4.53		1127 4.88	1119 4.85		1140 5.32	1115 4.83	Tu 1207 5.09	1207 5.09
W 1827 0.70		Th 1809 0.28	Sa 1752 0.57		Su 1817 0.39	M 1750 0.70	Tu 1839 0.79	
			2343 4.99			2345 4.95		
12 0011 4.85		27 0000 5.34	12 0611 0.89		27 0010 5.30	12 0619 0.81		27 0036 5.03
0634 1.12		0618 0.85	1157 5.03		0632 0.61	1203 5.02	W 0708 0.51	0708 0.51
Th 1228 4.80		F 1222 5.25	Su 1827 0.54		M 1226 5.44	Tu 1830 0.68	W 1254 5.15	1254 5.15
1904 0.56		1901 0.15			1857 0.47		1918 0.83	
13 0051 5.01		28 0050 5.51	13 0020 5.10		28 0052 5.32	13 0029 5.07		28 0118 5.06
0711 0.97		0708 0.71	0645 0.78		0717 0.49	0700 0.66	Th 0751 0.42	0751 0.42
F 1306 5.00		Sa 1309 5.52	M 1234 5.17		Tu 1308 5.48	W 1248 5.19	Th 1335 5.15	1335 5.15
1935 0.48		1945 0.11	1858 0.54		1933 0.57	1906 0.68	1952 0.89	
14 0125 5.10		29 0134 5.58	14 0055 5.19		29 0132 5.28	14 0114 5.15		29 0156 5.04
0743 0.85		0652 0.59	0719 0.70		0758 0.43	0740 0.54	F 0828 0.41	0828 0.41
Sa 1338 5.16		Su 1251 5.68	Tu 1311 5.28		W 1347 5.43	Th 1333 5.33	F 1413 5.09	1413 5.09
2003 0.44		1922 0.15	1926 0.56		2006 0.72	1942 0.69	2023 0.95	
15 0156 5.17		30 0115 5.57	15 0132 5.23		30 0210 5.18	15 0158 5.18		30 0231 5.00
0812 0.77		0734 0.49	0752 0.63		0836 0.45	0820 0.43	Sa 1451 4.98	0859 0.45
Su 1409 5.27		M 1330 5.75	W 1348 5.34		Th 1426 5.28	F 1416 5.40	2050 1.01	1451 4.98
2030 0.43		1957 0.27	1955 0.61		2036 0.88	2020 0.74		2050 1.01
31 0154 5.49						31 0303 4.93		31 0303 4.93
0812 0.45						0928 0.49		0928 0.49
Tu 1409 5.70						1525 4.83		1525 4.83
2028 0.46						2118 1.05		2118 1.05

These tables have been adjusted for BST. Chart Datum: 2.35m below Ordnance Datum (Newlyn)
Tides computed by POLTIPS software developed at the National Oceanography Centre



Welcome aboard the Yacht Havens family



We are a long-standing, family-owned British company with over 4,000 happy berth holders enjoying our 9 locations around the UK and the Netherlands.

- 1** Largs Yacht Haven 01475 675333
- 2** Troon Yacht Haven 01292 315553
- 3** Neyland Yacht Haven 01646 601601
- 4** Fambridge Yacht Haven 01621 740370
- 5** Lymington Yacht Haven 01590 677071
- 6** Haven Quay, Lymington 01590 677072
- 7** Plymouth Yacht Haven 01752 404231
- 8** Yacht Haven Quay, Plymouth 01752 481190
- 9** Jachthaven Biesbosch +31(0)162 68 22 49

Wishing you a wonderful boating season,
fair winds, and boat loads of good cheer!

yachthavens.com



mantsbrite

marine electronics

Sales, Service & Installation



- ✓ Authorised suppliers for all major brands of marine electronics
- ✓ Manufacturer trained engineers for on-board installation & repair
- ✓ Visit our showroom to view our working demonstration displays, drop in your repair to our workshop or pick up a spare/accessory
- ✓ Impartial advice & knowledge - over 50 years experience

B&G **Raymarine** BY FLIR **GARMIN** **KODEN**

FURUNO **SIMRAD** **LOWRANCE** **ICOM**

Chart Updating Service For: **C-MAP** & **NAVIONICS**

A family business based in Maldon Essex since 1964

Visit our Showroom:

19F Spital Rd, Maldon, CM9 6DY Tel: 01621 853003

sales@mantsbrite.com

www.mantsbrite.com