



# Richard Mille Cup 2026

Monday 15 to Thursday 25 June 2026

The Firth of Clyde, Scotland, UK

## SAILING INSTRUCTIONS

The Organising Authority (OA) is Classic Regattas Ltd

The notation '[NP]' in a rule means that a boat may not protest another boat for breaking that rule. This changes RRS 60.1(a).

### 1 RULES

---

1.1 The regatta will be governed by the rules as defined in The Racing Rules of Sailing (RRS).

1.2 World Sailing Development rule DR21-01

DR21-01 applies.

The definition of Start is changed as follows:

Start. A boat starts when her hull having been entirely on the pre-start side of the starting line, and having complied with rule 30.1 if it applies, any part of her hull crosses the starting line from the pre- start side to the course side either:

at or after her starting signal, or during the last 20 seconds before her starting signal.

RRS 29.1 does not apply. When a boat starts in accordance with item (b) of the definition Start she shall not return to the pre-start side of the line, and a starting penalty shall be applied to her elapsed time.

For the inshore races (up to 40NM) the starting penalty shall be 3% of her elapsed time.

For races longer than 40NM the starting penalty shall be 10 minutes.

Any boat that crosses the starting line in the direction of the course side between her preparatory signal and 20 seconds before her starting signal will be scored DNS. This changes RRS 29 and 63.1.

Any yacht sailing through the starting line from the course side after her preparatory signal will be scored DSQ. This changes RRS 29 and 63.1.

1.3 International Regulations for Prevention of Collision at Sea (IRPCAS)

Except when changed in the Sailing Instructions (SI), the rules of RRS Part 2 are replaced by the right- of-way rules of the IRPCS, or by government right of way rules, at night\*.

\*'Night' is defined as the end of nautical twilight and the beginning of nautical twilight the next day.

1.4 Navigation lights shall be displayed at all times during night hours.

1.5 Courses may include virtual marks defined by their latitude and longitude. If a course includes such virtual marks then RRS Appendix WP will apply.

1.6 World Sailing Offshore Special Regulations (OSR)

(a) OSR Category 3 plus Category 2 life raft will apply to Classes 1 and 2.

(b) Classes 3 and 4 shall comply with OSR Appendix B, except that Appendix B 3.02 and Appendix B 4.22.3 shall not apply.

(c) When details of Special Regulations cannot be met the OA may accept an alternative.

- 1.7 [DP] AIS. All boats shall ensure that their AIS transponder is switched on (i.e. transmitting and receiving) at all times while at sea. The name of the boat shall be transmitted rather than just the MMSI, unless the equipment does not have this capability.
- 1.8 Local Regulations: Notices to Mariners and local regulations for the Clydeport area will apply see <https://www.peelports.com/marine/our-ports/clydeport>

## 2 CHANGES TO SAILING INSTRUCTIONS

---

Any change to the sailing instructions will be posted not less than one hour before the first start of the day it will take effect, except that any change to the schedule of races will be posted by 2000 on the day before it will take effect.

## 3 COMMUNICATIONS WITH COMPETITORS

---

- 3.1 The online official noticeboard is located at the event [www.richardmillecup.com/notice-board](http://www.richardmillecup.com/notice-board). There will be no physical official notice board.
- 3.2 The race committee may make courtesy broadcasts to competitors by VHF radio on International Channel 72. If VHF Channel 72 becomes blocked or unusable Flag W will be displayed from the committee vessel and the broadcast communication channel will be changed to International Channel 77.
- 3.3 [DP] From the first warning signal until the end of the last race of the day, except in an emergency, a boat shall not make voice or data transmissions and shall not receive voice or data communication that is not available to all boats.

Skipper's race briefings will take place in Largs SC at the following time, not that the briefings for the longer races will take place the day before the race takes place:

Date of Race	Race	Briefing Time (and date if different from the day of the race)
Tues 16 JUN 2026	Ailsa Craig Race	<b>Mon 15 June - 1400</b>
Wed 17 JUN 2026	Inchmarnock Race	0830
Thu 18 JUN 2026	The King's Course	0830
Fri 19 JUN 2026	Clyde Race	0830
Sun 21 JUN 2026	Round Arran Race	<b>Sat 20 June - 1030</b>
Mon 22 JUN 2026	Lady Isle Race	<b>Sat 20 June - 1030</b>
Tues 23 JUN 2026	Cumbraes Race	0830
Wed 24 JUN 2026	Holy Island Race	0830

- 3.4 The primary method of communicating racing information will be via the official noticeboard on the website, however WhatsApp may be used to provide additional information as well as to draw attention to racing related information posted on the notice board. Competitors can join the WhatsApp group at Registration.

## 4 CODE OF CONDUCT

---

[DP] Competitors and support persons shall comply with reasonable requests from race officials.

## 5 SIGNALS MADE ASHORE

---

Signals Ashore will be made from the Largs SC Clubhouse flagpole Located on the Southern side of the Club balcony.

## 6 SCHEDULE OF RACES

---

Date	Activity	Time	Location
Mon 15 JUN 2026	Registration	1000 to 1400	Largs Sailing Club
	Race briefing	1400 Note: this changes the NoR.	
Tues 16 JUN 2026	Ailsa Craig Race	*TBA	Start: Largs Channel
Wed 17 JUN 2026	Inchmarnock Race	First warning signal 1025	Start: Largs Channel
Thu 18 JUN 2026	The King's Course	First warning signal 1025	Start: Largs Channel
Fri 19 JUN 2026	Clyde Race	First warning signal 1025	Start: Largs Channel
Sat 20 JUN 2026	Reserve Day		
Sun 21 JUN 2026	Round Arran Race	*TBA	Start: Largs Channel
Mon 22 JUN 2026	Lady Isle Race	*TBA	Start: Largs Channel
Tues 23 JUN 2026	Cumbraes Race	First warning signal 1025	Start: Largs Channel
Wed 24 JUN 2026	Holy Island Race	First warning signal 1025	Start: Largs Channel
Thu 25 JUN 2025	Waverly Cruise and Prizegiving	TBA	TBA

\* The start times of the longer passage races will be decided after considering the forecast weather conditions to maximize the likelihood, as far as can be reasonably expected, that boats arrive at the finish in daylight.

- 6.1 The scheduled time of the warning signal, where applicable, is as shown in the table above. Note that this schedule changes the dates of some races as published in the Notice Of Race (NoR), this schedule is correct and the one published in the NoR should be ignored.
- 6.2 To alert boats that a race or sequence of races will begin soon, the orange starting line flag will be displayed with one sound at least five minutes before the first warning signal of the day is made.
- 6.3 On the last scheduled day of racing no warning signal will be made after 1400.

## 7 CLASS FLAGS

---

- 7.1 Class flags shall be supplied by the OA and are:

Class	Flag
Class 1	White with Black Logo
Class 2	Black with White Logo
Class 3	Blue with White Logo
Class 4	Burgundy with white logo

- 7.2 [DP][NP] Where possible competitors should display their class flag from their starboard shroud or backstay.

## 8 RACING AREAS

---

The racing area is the Firth of Clyde.

## 9 COURSES

---

Please see the attached Appendices for specific course details. The courses may be changed at the discretion of the OA if conditions dictate.

## 10 MARKS

---

Please see the attached Appendices for mark information.

## 11 OBSTRUCTIONS

---

Please see the attached Appendices.

## **12 THE START**

---

- 12.1 Races will be started using RRS 26 with the warning signal made 5 minutes before the starting signal.
- 12.2 Please see the attached Appendices for start line details.
- 12.3 [DP] [NP] When a yellow inflatable mark is laid near the signal vessel approximately on the starting line, it is a starting limit mark that should be left on the same side as the nearby signal vessel. Boats that pass between the yellow mark and the signal vessel may be subject to protest by the race committee.
- 12.4 See SI 1.2.
- 12.5 [DP][NP] Boats whose preparatory signal has not been made shall avoid the starting area.

## **13 CHANGE OF THE NEXT LEG OF THE COURSE.**

---

Not applicable at this event

## **14 THE FINISH**

---

Please see the attached Appendices for finish line details.

## **15 PENALTY SYSTEM**

---

RRS 44.1, 44.2, 44.3 shall not apply. A boat that may have broken a rule of RRS Part 2 or RRS 31 may take a time penalty unless she has caused serious damage or injury, in which case she shall retire. The penalty shall be 2% of her elapsed time rounded up or down to the nearest second. A boat taking such a penalty shall inform the RC as soon as possible after finishing racing for the day. This changes RRS 44.

## **16 TIME LIMITS AND TARGET TIMES**

---

Please see the attached Appendices for Time Limit details.

## **17 HEARING REQUESTS**

---

- 17.1 The protest time limit for each Class is 90 minutes after the last boat in that class finishes or the race committee signals no more racing today, whichever is later. Competitors intending to protest should notify the Race Committee by VHF as soon as reasonably possible.
- 17.2 Notices will be posted no later than 120 minutes after the protest time limit to inform competitors of hearings in which they are parties or named as witnesses.

## **18 SCORING**

---

- 18.1 Eight races are scheduled in the series.
- 18.2 One race is required to be completed to constitute a series.
- 18.3 No race scores shall be excluded.
- 18.4 In each race finishers will be ranked according to their corrected times calculated using the CIM time-on-time correction factor.
- 18.5 The CIM time on time rating system will be used to calculate results.
- 18.6 The overall winner of the Richard Mille Cup will be the best overall performance (across all the classes classes) calculated using the following formula:

$100 * (N - P + 1) / N + 50 * \text{Log}(N / P)$  where

N = the number of boats in a class and P is the boat's performance.

## **19 SAFETY REGULATIONS**

---

### 19.1 [NP] [DP] Clydeport Operations Limited Restrictions.

**NARROW CHANNELS.** Attention is drawn to the International Regulations for the prevention of collisions at sea, 1972. Particular notice shall be taken of Rule 9b which states that “a vessel of less than 20m in length or a sailing vessel shall not impede the passage of a vessel which can safely navigate only within a narrow channel or fairway”. Whilst racing or on a passage in the Firth of Clyde north of Cumbrae Head yachts must regard any such recommended channels as a “Narrow Channel” within the meaning of the IRPCS 9b.

Furthermore, Clydeport Operations Limited has decreed that any waters in the Firth of Clyde where vessels by virtue of their size, draught, speed or proximity to land, hazards and other vessels are unable to manoeuvre freely must be regarded as a “Narrow Channel”. Whilst racing any yacht which is unable for reasons of lack of wind or other cause, to sail clear of a large power-driven vessel shall start her engine and/or paddle in order to clear and thereafter shall report full details to the Race Committee.

Competitors are reminded of the Clydeport Operations Limited Byelaw which prohibits yachts and other craft from manoeuvring within 100m of any ferry terminal. Particular regard should be paid to this when in the vicinity of the Caledonian Macbrayne facilities at Largs, Cumbrae and Wemyss Bay.

### 19.2 [NP] [DP] A boat that retires from a race shall notify the race committee at the first reasonable opportunity.

## **20 REPLACEMENT OF CREW OR EQUIPMENT**

---

Substitution of the registered person in charge during the series is not permitted without prior written approval of the Race Committee.

## **21 EQUIPMENT AND MEASUREMENT CHECKS**

---

### 21.1 A boat or equipment may be inspected at any time for compliance with the class rules, notice of race and sailing instructions. The fact that race officials may conduct inspections of a boat does not reduce the responsibilities of each competitor set out in the notice of race.

### 21.2 [DP] When instructed by a race official on the water, a boat shall proceed to a designated area for inspection.

## **22 SUPPLIED BOATS.**

---

Not applicable at this event

## **23 OFFICIAL VESSELS**

---

Official Committee Vessels will display a yellow event flag.

## **24 SUPPORT TEAMS**

---

[DP] [NP] Support boats shall be registered with the OA and should display a green event flag.

## **25 TRASH DISPOSAL**

---

Trash shall be disposed of in the appropriate places when ashore – for yachts arriving from outside of the UK, imported food waste can only be disposed of in a dedicated container located at Fairlie Quay. Imported food waste shall not be disposed of at Largs Yacht Haven.

## **26 BERTHING**

---

[DP] Boats shall be kept in their assigned places in the harbour.

## **27 HAUL OUT RESTRICTIONS**

---

[DP] Boats shall not be hauled out during the event except with and according to the terms of prior written permission of the race committee.

## **28 DIVING EQUIPMENT AND PLASTIC POOLS**

---

[DP] Underwater breathing apparatus, face masks, snorkels and plastic pools or their equivalent shall not be used around keelboats between the preparatory signal of the first race and the end of the Event except with the prior written approval of the race committee.

## **29 PRIZES**

---

- 29.1 The perpetual Richard Mille Cup will be awarded to the boat with the overall best performance.
- 29.2 The overall winner will receive a keeper's trophy.
- 29.3 Other class winners will also receive a keeper's trophy. These trophies will be smaller versions of the Richard Mille Cup.

## **30 RISK STATEMENT**

---

- 30.1 Rule 3 of the Racing Rules of Sailing states: "The responsibility for a boat's decision to participate in a race or to continue racing is hers alone".

Sailing is by its nature an unpredictable sport and therefore inherently involves an element of risk. By taking part in the event, each competitor agrees and acknowledges that:

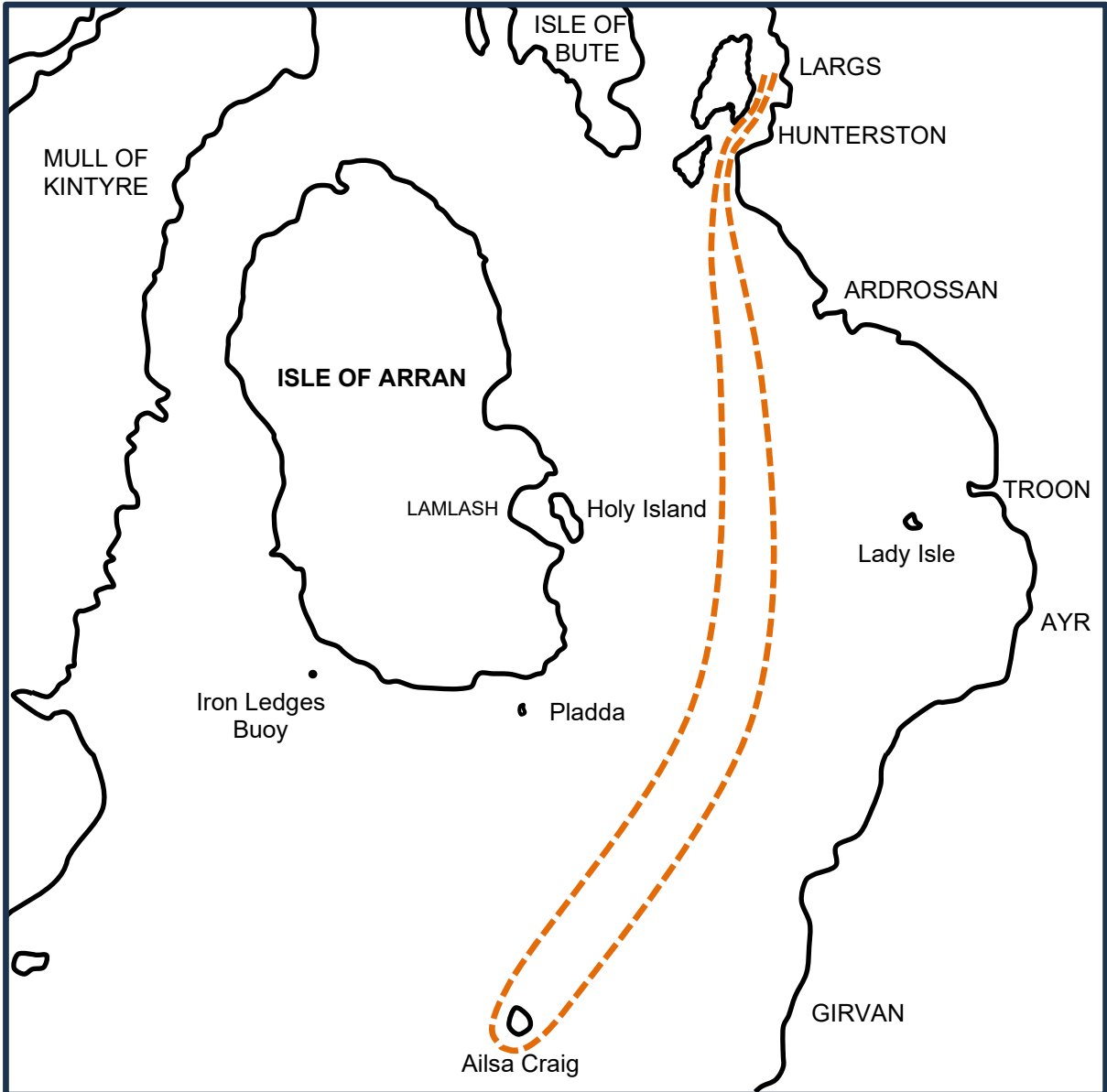
- a) They are aware of the inherent element of risk involved in the sport and accept responsibility for the exposure of themselves, their crew and their boat to such inherent risk whilst taking part in the event;
- b) They are responsible for the safety of themselves, their crew, their boat and their other property whether afloat or ashore;
- c) They accept responsibility for any injury, damage or loss to the extent caused by their own actions or omissions;
- d) Their boat is in good order, equipped to sail in the event and they are fit to participate;
- e) The provision of a race management team, patrol boats and other officials and volunteers by the event organiser does not relieve them of their own responsibilities;
- f) The provision of patrol boat cover is limited to such assistance, particularly in extreme weather conditions, as can be practically provided in the circumstances;
- g) It is their responsibility to familiarise themselves with any risks specific to this venue or this event drawn to their attention in any rules and information produced for the venue or event and to attend any safety briefing held for the event.

## **31 INSURANCE**

---

Each participating boat shall be insured with valid third-party liability insurance with a minimum cover of £5,000,000 per incident or the equivalent.

**Appendix A - AILSA CRAIG RACE**



*Diagrams are not to scale and should not be used for navigation.  
See Admiralty Chart SC2131 and SC2126 for more accurate information*

**A1. THE START**

A1.1 The starting line shall be between the staff displaying an orange flag on the committee vessel, anchored near Largs Yacht Haven, and an orange inflatable race mark.

**A2. THE COURSE**

A2.1 The Course for Classes 1 and 2 only is as follows:

<b>CLASSES 1 and 2 ONLY</b>	
Around the island of Ailsa Criag (approx. 64NM)	
<b>Mark</b>	<b>Direction</b>
Start Line	North to South
"Hun10" Nav Buoy (red)	Pass to PORT
Ailsa Craig Island	Pass to PORT
"Hun 9" Nav Buoy (red)	Pass to PORT
Finish Line	Cross South to North

A2.2 The course for Classes 3 and 4 will be selected from the marks described at Appendix I and will be advised at the briefing on the day.

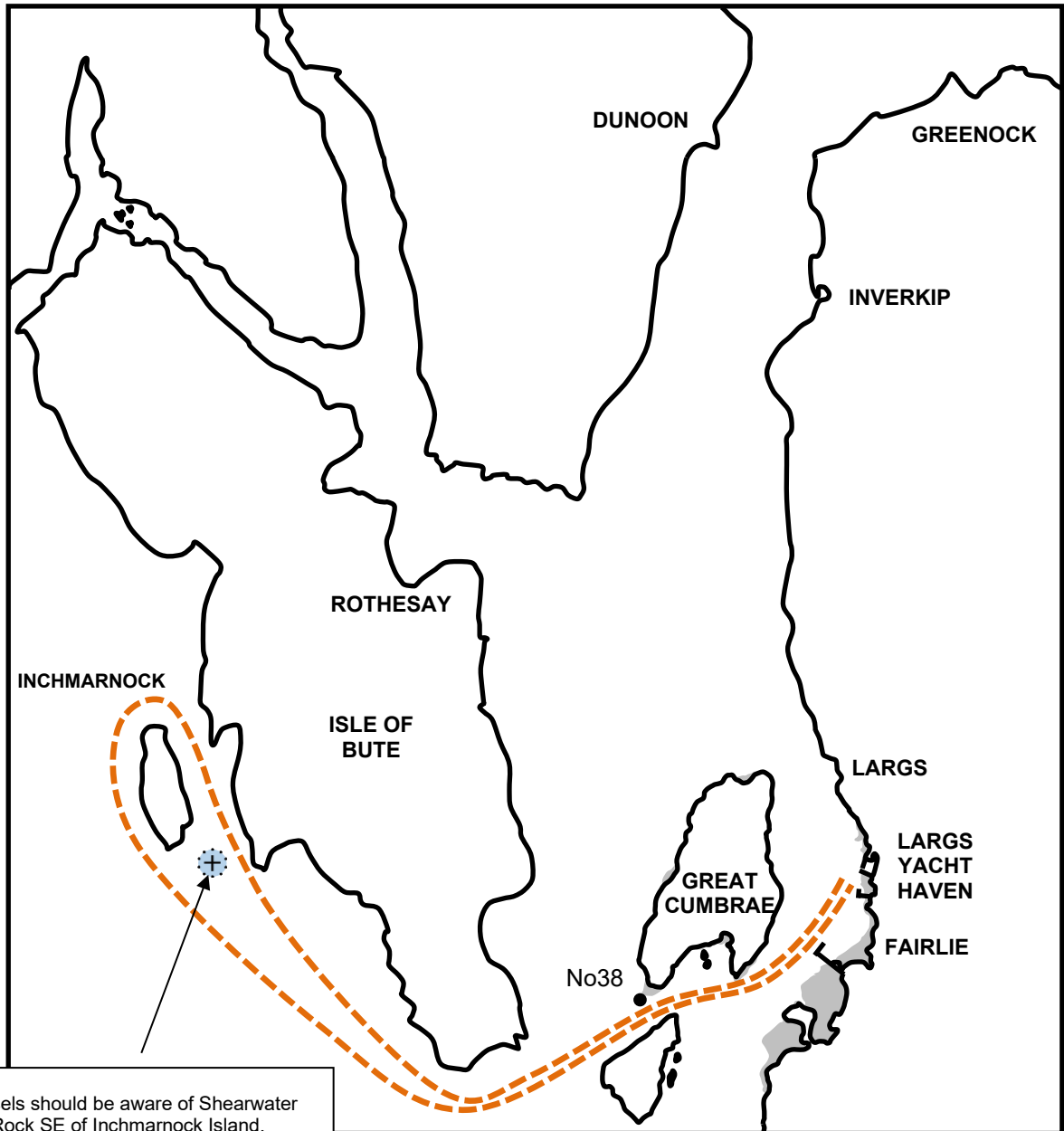
**A3. THE FINISH**

A3.1 The finishing line shall be between a flagpole displaying a blue flag on the Largs SC building and a blue inflatable race mark, located approximately 0.4NM to the west of Largs SC.

A3.2 **SHORTENED COURSE:** The course may be shortened at any mark of the course in accordance with RRS 32.2 or, in addition, at an inflatable buoy (that is not necessarily a pre-defined mark of the course) laid specifically for shortening the course. In the event of a shortened course boats shall finish between a committee vessel displaying flag "S" and the adjacent mark, the location of any such finishing line will be announced regularly by VHF.

A3.3 **TIME LIMITS:** The time limit for Classes 1 and 2 is 0200 on Wed 17 June, the time limit for Classes 3 and 4 is 1900 on Tuesday 16 June. Boats failing to finish within the time limit, and not subsequently retiring, penalized or given redress, will be scored Time Limit Expired (TLE) without a hearing. A boat scored TLE shall be scored points for the finishing place one more than the points scored by the last boat that finished within the time limit. This changes RRS 35, A5.1, A5.2 and A10.

**Appendix B - INCHMARNOCK RACE**



Vessels should be aware of Shearwater  
Rock SE of Inchmarnock Island.  
Approx. position 55°46.363N, 05°08.397W

*See Admiralty Chart SC2131  
for more accurate information*

*Diagrams are not to scale and should not be used for navigation.  
See Admiralty Chart SC2131 for more accurate information*

## B1. THE START

B1.1 The starting line shall be between the staff displaying an orange flag on the committee vessel, anchored near Largs Yacht Haven, and an orange inflatable race mark.

## B2. THE COURSE

B2.1 The Course for all classes is as follows:

<b>ALL CLASSES</b>	
Around the island of Inchmarnock (approx. 29NM)	
<b>Mark</b>	<b>Direction</b>
Start Line	North to South
Great Cumbrae Island	Pass to STARBOARD
Little Cumbrae Island	Pass to PORT
"No 38" South Cardinal Buoy (yellow black)	Pass to STARBOARD
Inchmarnock Island	Pass to PORT
"No 38" South Cardinal Buoy (yellow black)	Pass to PORT
Finish Line	Cross South to North

## B3. THE FINISH

B3.1 The finishing line shall be between a flagpole displaying a blue flag on the Largs SC building and a blue inflatable race mark, located approximately 0.4NM to the west of Largs SC.

B3.2 **SHORTENED COURSE:** The course may be shortened at any mark of the course in accordance with RRS 32.2 or, in addition, at an inflatable buoy (that is not necessarily a pre-defined mark of the course) laid specifically for shortening the course. In the event of a shortened course boats shall finish between a committee vessel displaying flag "S" and the adjacent mark, the location of any such finishing line will be announced regularly by VHF.

B3.3 **TIME LIMITS:** The time limit for all classes is 1700. If one boat in a class finishes within the time limit the time limit will be extended by one hour for other boats in that class. Boats failing to finish within the time limit, and not subsequently retiring, penalized or given redress, will be scored Time Limit Expired (TLE) without a hearing. A boat scored TLE shall be scored points for the finishing place one more than the points scored by the last boat that finished within the time limit. This changes RRS 35, A5.1, A5.2 and A10.



**C1. THE START**

C1.1 The starting line shall be between the staff displaying an orange flag on the committee vessel, anchored near Largs Yacht Haven, and an orange inflatable race mark.

**C2. THE COURSE**

C2.1 The Course for all classes is as follows:

<b>ALL CLASSES</b> The King's Course (approx. 25NM)	
<b>Mark</b>	<b>Direction</b>
Start	Cross South to North
"J" Navigation Buoy (red)	Pass to PORT
Yellow Inflatable Race Mark (approx. position 55°50.6N, 05°00.0W)	Pass to PORT
Yellow Inflatable Race Mark (approx. position 55°47.5N, 05°00.0W)	Pass to PORT
"Hun1" Navigation Buoy (yellow)	Pass to PORT
Yellow Inflatable Race Mark (approx. position 55°50.6N, 05°00.0W)	Pass to STARBOARD
"Hun1" Navigation Buoy (yellow)	Pass to STARBOARD
Finish	Cross North to South

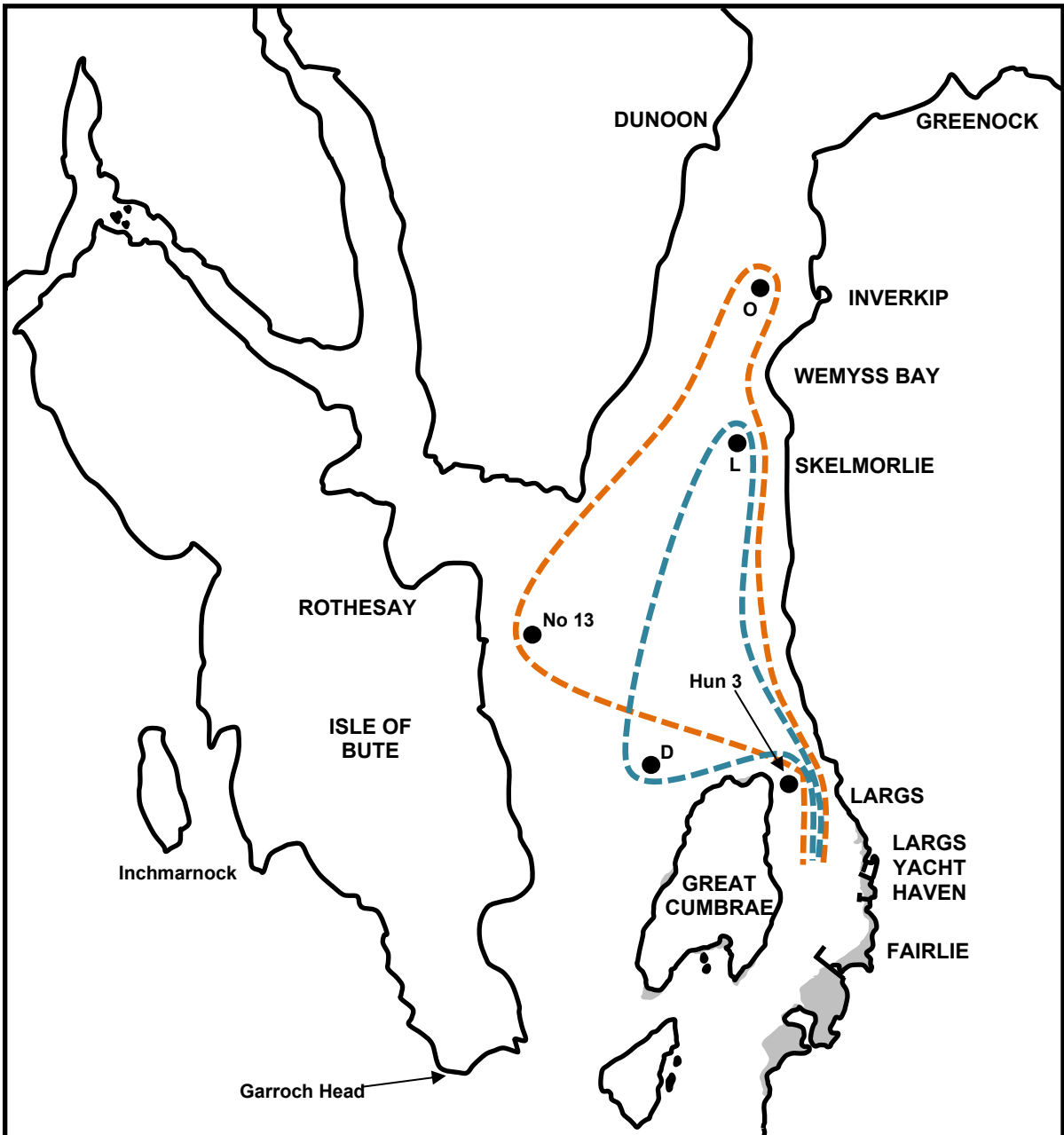
**C3. THE FINISH**

C3.1 The finishing line shall be between a flagpole displaying a blue flag on the Largs SC building and a blue inflatable race mark, located approximately 0.4NM to the west of Largs SC.

C3.2 **SHORTENED COURSE:** The course may be shortened at any mark of the course in accordance with RRS 32.2 or, in addition, at an inflatable buoy (that is not necessarily a pre-defined mark of the course) laid specifically for shortening the course. In the event of a shortened course boats shall finish between a committee vessel displaying flag "S" and the adjacent mark, the location of any such finishing line will be announced regularly by VHF.

C3.3 **TIME LIMITS:** The time limit for all classes is 1700. If one boat in a class finishes within the time limit the time limit will be extended by one hour for other boats in that class. Boats failing to finish within the time limit, and not subsequently retiring, penalized or given redress, will be scored Time Limit Expired (TLE) without a hearing. A boat scored TLE shall be scored points for the finishing place one more than the points scored by the last boat that finished within the time limit. This changes RRS 35, A5.1, A5.2 and A10.

**Appendix D - THE CLYDE RACE**



*Diagrams are not to scale and should not be used for navigation.  
See Admiralty Chart SC2131 for more accurate information*

### D.1 THE START

D1.1 The starting line shall be between the staff displaying an orange flag on the committee vessel, anchored near Largs Yacht Haven, and an orange inflatable race mark.

### D.2 THE COURSE

D2.1 The Course for **Classes 1 and 2 only** is as follows:

<b>CLASSES 1 and 2 ONLY</b> To Inverkip and back via Rothesay (approx. 21NM)	
<b>Mark</b>	<b>Direction</b>
Start	Cross South to North
"Hun 3" Navigation Buoy (red)	Pass to PORT
"L" Navigation Buoy (red)	Pass to PORT
"O" Navigation Buoy (green)	Pass to PORT
"No 13" Isolated Danger Beacon (black red black)	Pass to PORT
"Hun 3" Navigation Buoy (red)	Pass to STARBOARD
Finish	Cross North to South

D2.2 The Course for **Classes 3 and 4 only** is as follows:

<b>CLASSES 3 and 4 ONLY</b> To Skelmorlie and back (approx. 14NM)	
<b>Mark</b>	<b>Direction</b>
Start	Cross South to North
"Hun 3" Navigation Buoy (red)	Pass to PORT
"L" Navigation Buoy (red)	Pass to PORT
"D" Navigation Buoy (red)	Pass to PORT
"Hun 3" Navigation Buoy (red)	Pass to STARBOARD
Finish	Cross North to South

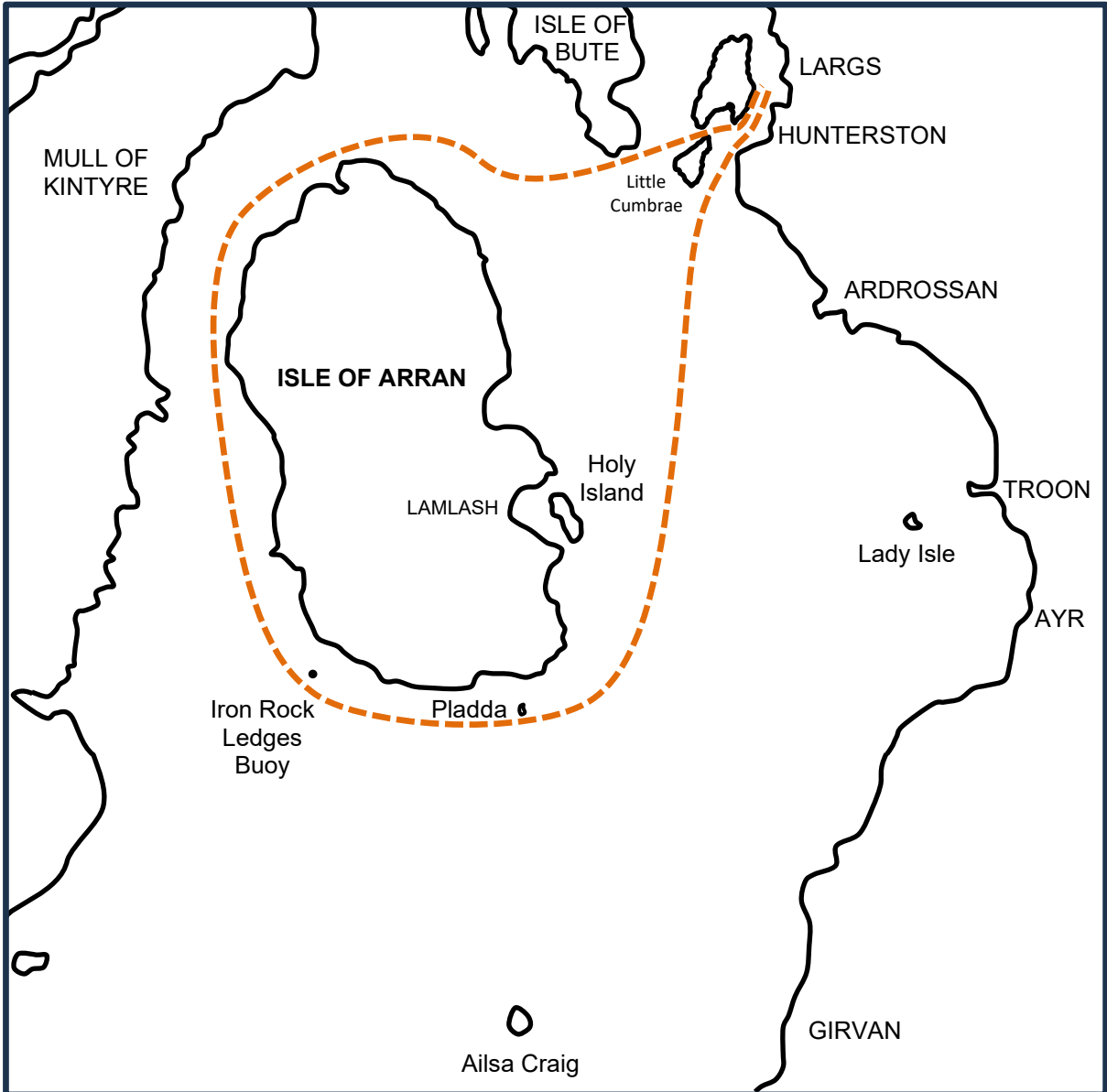
### D.3 THE FINISH

D3.1 The finishing line shall be between a flagpole displaying a blue flag on the Largs SC building and a blue inflatable race mark, located approximately 0.4NM to the west of LSC.

D3.2 **SHORTENED COURSE:** The course may be shortened at any mark of the course in accordance with RRS 32.2 or, in addition, at an inflatable buoy (that is not necessarily a pre-defined mark of the course) laid specifically for shortening the course. In the event of a shortened course boats shall finish between a committee vessel displaying flag "S" and the adjacent mark, the location of any such finishing line will be announced regularly by VHF.

D3.3 **TIME LIMITS:** The time limit for all classes is 1700. If one boat in a class finishes within the time limit the time limit will be extended by one hour for other boats in that class. Boats failing to finish within the time limit, and not subsequently retiring, penalized or given redress, will be scored Time Limit Expired (TLE) without a hearing. A boat scored TLE shall be scored points for the finishing place one more than the points scored by the last boat that finished within the time limit. This changes RRS 35, A5.1, A5.2 and A10.

**Appendix E – ROUND ARRAN RACE**



*Diagrams are not to scale and should not be used for navigation.  
See Admiralty Chart SC2131 and SC2126 for more accurate information*

**E.1 THE START**

E1.1 The starting line shall be between the staff displaying an orange flag on the committee vessel, anchored near Largs Yacht Haven, and an orange inflatable race mark.

**E.2 THE COURSE**

E2.1 The Course for Classes 1 and 2 only is as follows

<b>CLASSES 1 and 2 ONLY</b>	
Around the Isla of Arran (approx. 71NM)	
<b>Mark</b>	<b>Direction</b>
Start Line	North to South
“Hun 9” Nav Buoy (red)	Pass to STARBOARD
Little Cumbrae Island	Pass to PORT
Isle of Arran	Pass to PORT
Iron Rock Ledges Navigation Buoy (Green)	Pass to PORT
“Hun10” Nav Buoy (green)	Pass to STARBOARD
Finish Line	Cross South to North

E2.2 The course for Classes 3 and 4 will be selected from the list of marks at Appendix I and will be advised at the briefing.

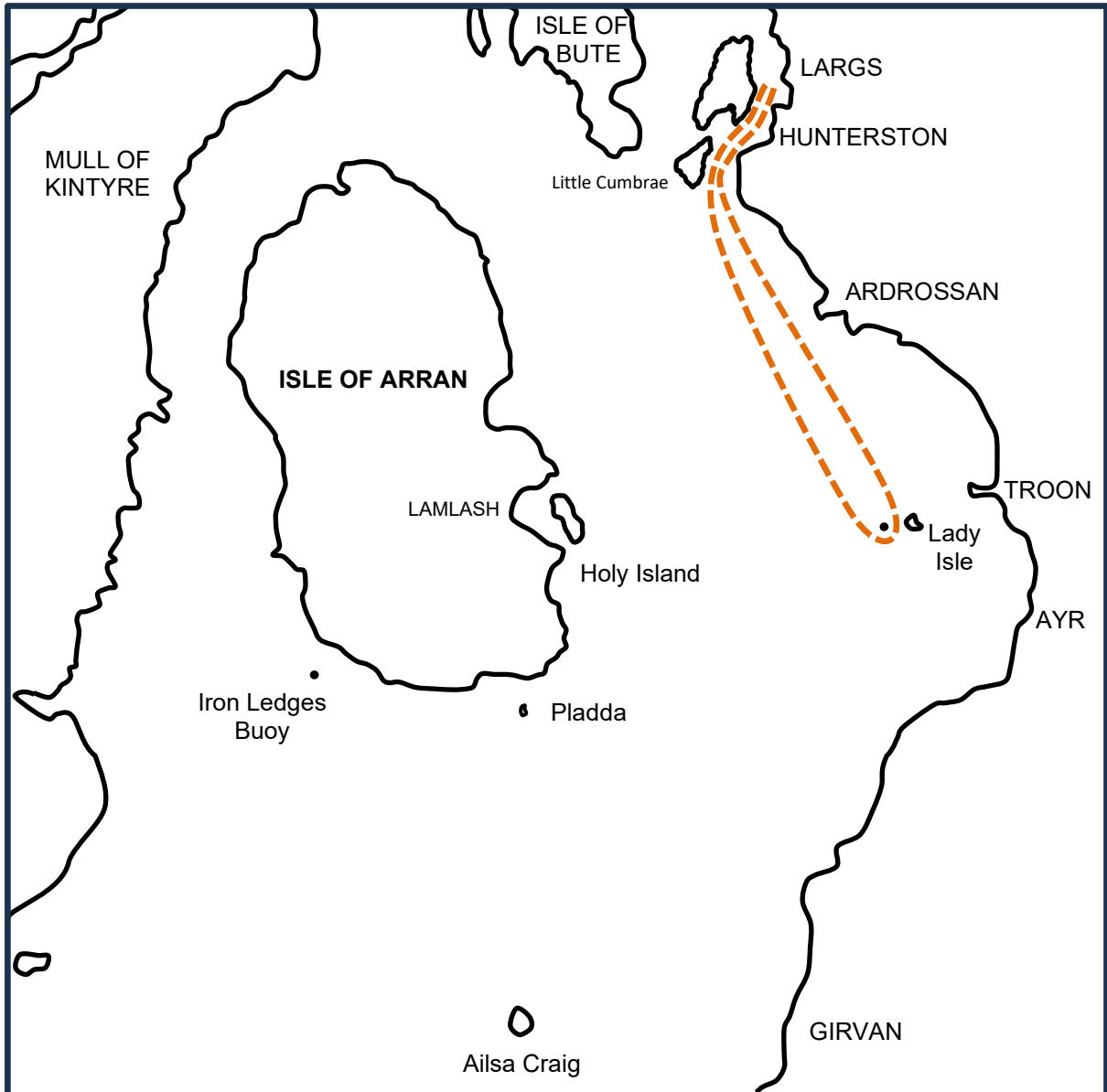
**E.3 THE FINISH**

E3.1 The finishing line shall be between a flagpole displaying a blue flag on the Largs SC building and a blue inflatable race mark, located approximately 0.4NM to the west of Largs SC.

E3.2 **SHORTENED COURSE:** The course may be shortened at any mark of the course in accordance with RRS 32.2 or, in addition, at an inflatable buoy (that is not necessarily a pre-defined mark of the course) laid specifically for shortening the course. In the event of a shortened course boats shall finish between a committee vessel displaying flag "S" and the adjacent mark, the location of any such finishing line will be announced regularly by VHF.

E3.3 **TIME LIMITS:** The time limit for Classes 1 and 2 is 0200 on Monday 22 June, the time limit for Classes 3 and 4 is 1900 on Sunday 21 June. Boats failing to finish within the time limit, and not subsequently retiring, penalized or given redress, will be scored Time Limit Expired (TLE) without a hearing. A boat scored TLE shall be scored points for the finishing place one more than the points scored by the last boat that finished within the time limit. This changes RRS 35, A5.1, A5.2 and A10.

**Appendix F - LADY ISLE RACE**



*Diagrams are not to scale and should not be used for navigation.  
See Admiralty Chart SC2131 and SC2126 for more accurate information*

**F.1 THE START**

F1.1 The starting line shall be between the staff displaying an orange flag on the committee vessel, anchored near Largs Yacht Haven, and an orange inflatable race mark.

**F.2 THE COURSE**

F2.1 The Course for **Classes 1 and 2 only** is as follows:

<b>CLASSES 1 and 2 ONLY</b>	
To Lady Isle and Back (approx. 33NM)	
<b>Mark</b>	<b>Direction</b>
Start Line	North to South
"Hun10" Nav Buoy (green)	Pass to PORT
"Waypoint L" - 55°31.626N, 04°44.994W, Approx 0.5NM W of Lady Isle	Pass to PORT
"Hun 9" Nav Buoy (red)	Pass to PORT
Finish Line	Cross South to North

F2.2 The course for Classes 3 and 4 will be selected from the list of marks at Appendix I and will be advised at the briefing.

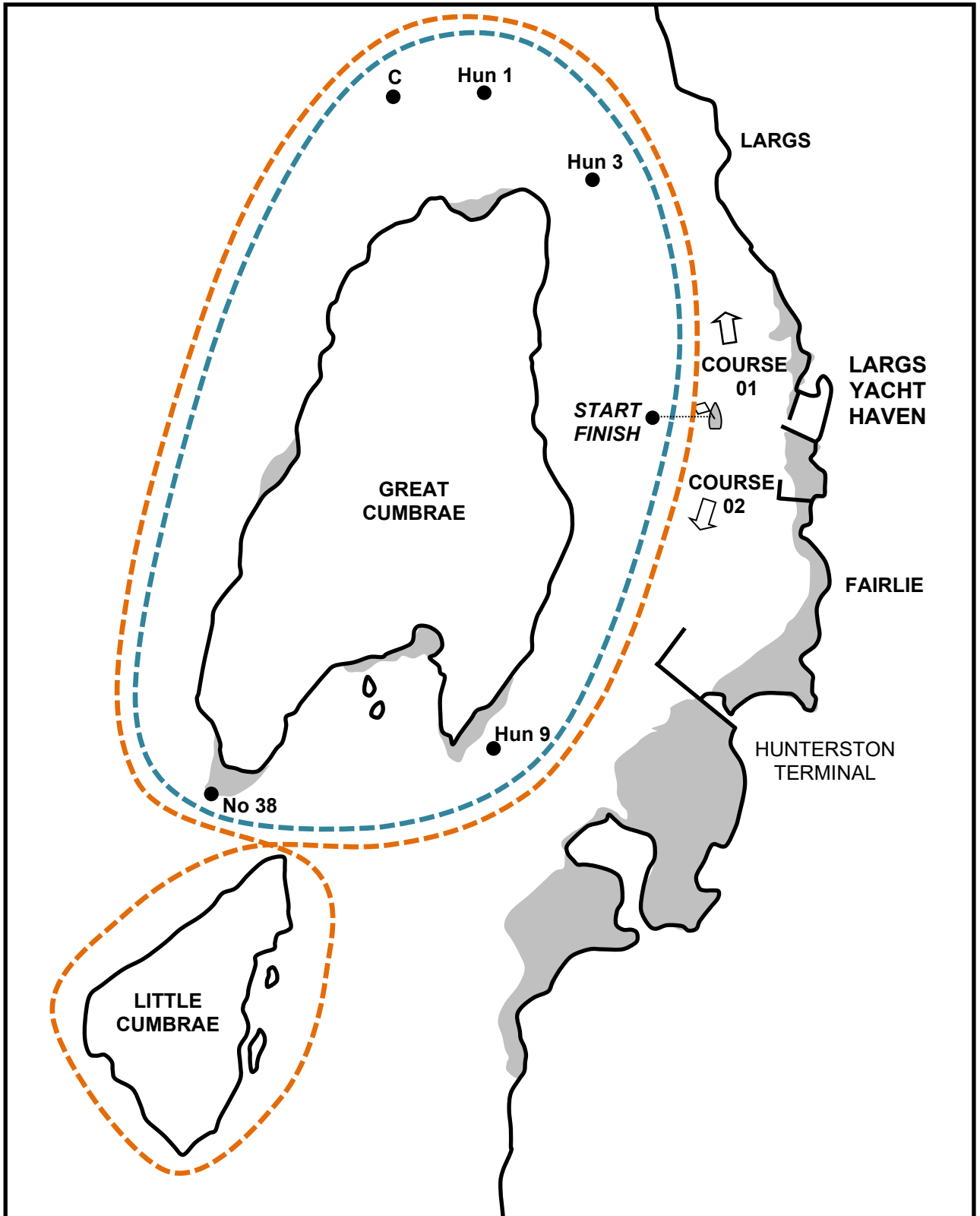
**F.3 THE FINISH**

F3.1 The finishing line shall be between a flagpole displaying a blue flag on the Largs SC building and a blue inflatable race mark, located approximately 0.4NM to the west of LSC.

F3.2 **SHORTENED COURSE:** The course may be shortened at any mark of the course in accordance with RRS 32.2 or, in addition, at an inflatable buoy (that is not necessarily a pre-defined mark of the course) laid specifically for shortening the course. In the event of a shortened course boats shall finish between a committee vessel displaying flag "S" and the adjacent mark, the location of any such finishing line will be announced regularly by VHF.

F3.3 **TIME LIMITS:** The time limit for Classes 1 and 2 is 0200 on Tuesday 23 June, the time limit for Classes 3 and 4 is 1900 on Monday 22 June. Boats failing to finish within the time limit, and not subsequently retiring, penalized or given redress, will be scored Time Limit Expired (TLE) without a hearing. A boat scored TLE shall be scored points for the finishing place one more than the points scored by the last boat that finished within the time limit. This changes RRS 35, A5.1, A5.2 and A10.

**Appendix G – THE CUMBRAES RACE**



*Diagrams are not to scale and should not be used for navigation.  
See Admiralty Chart SC2131 for more accurate information*

**G.1 THE START**

G1.1 The starting line shall be between the staff displaying an orange flag on the committee vessel, anchored near Largs Yacht Haven, and an orange inflatable race mark.

**G.2 THE COURSE**

G2.1 The course to be sailed shall be indicated by a yellow number on a black background displayed on the committee vessel.

**G2.2 COURSE 01.**

<b>CLASSES 1 and 2 ONLY</b>	
Two figures of eight around Great and Little Cumbrae Islands – North About (approx. 30NM)	
<b>Mark</b>	<b>Direction</b>
Start/Finish Line	Cross South to North
“Hun3” Nav Buoy (red)	Pass to PORT
“Hun1” Nav Buoy (yellow)	Pass to PORT
“C” Nav Buoy (green)	Pass to PORT
“No 38” S. Cardinal Buoy	Pass to PORT
Little Cumbrae Island ( <i>rounding mark</i> )	Pass to STARBOARD
“Hun 9” Nav Buoy (red)	Pass to PORT
Start/Finish Line	Cross South to North
“Hun3” Nav Buoy (red)	Pass to PORT
“Hun1” Nav Buoy (yellow)	Pass to PORT
“C” Nav Buoy (green)	Pass to PORT
“No 38” S. Cardinal Buoy	Pass to PORT
“Hun 9” Nav Buoy (red)	Pass to PORT
Little Cumbrae Island ( <i>rounding mark</i> )	Pass to STARBOARD
“Hun 9” Nav Buoy (red)	Pass to PORT

<b>CLASS 3 and 4 ONLY</b>	
A single lap around Great Cumbrae Island – North About (approx. 22nm)	
<b>Mark</b>	<b>Direction</b>
Start/Finish Line	Cross South to North
“Hun3” Nav Buoy (red)	Pass to PORT
“Hun1” Nav Buoy (yellow)	Pass to PORT
“C” Nav Buoy (green)	Pass to PORT
“No 38” S. Cardinal Buoy	Pass to PORT
“Hun 9” Nav Buoy (red)	Pass to PORT
Start/Finish Line	Cross South to North
“Hun3” Nav Buoy (red)	Pass to PORT
“Hun1” Nav Buoy (yellow)	Pass to PORT
“C” Nav Buoy (green)	Pass to PORT
“No 38” S. Cardinal Buoy	Pass to PORT
“Hun 9” Nav Buoy (red)	Pass to PORT
Start/Finish Line	Cross South to North

*Continued overleaf*

## G2.3 COURSE 02.

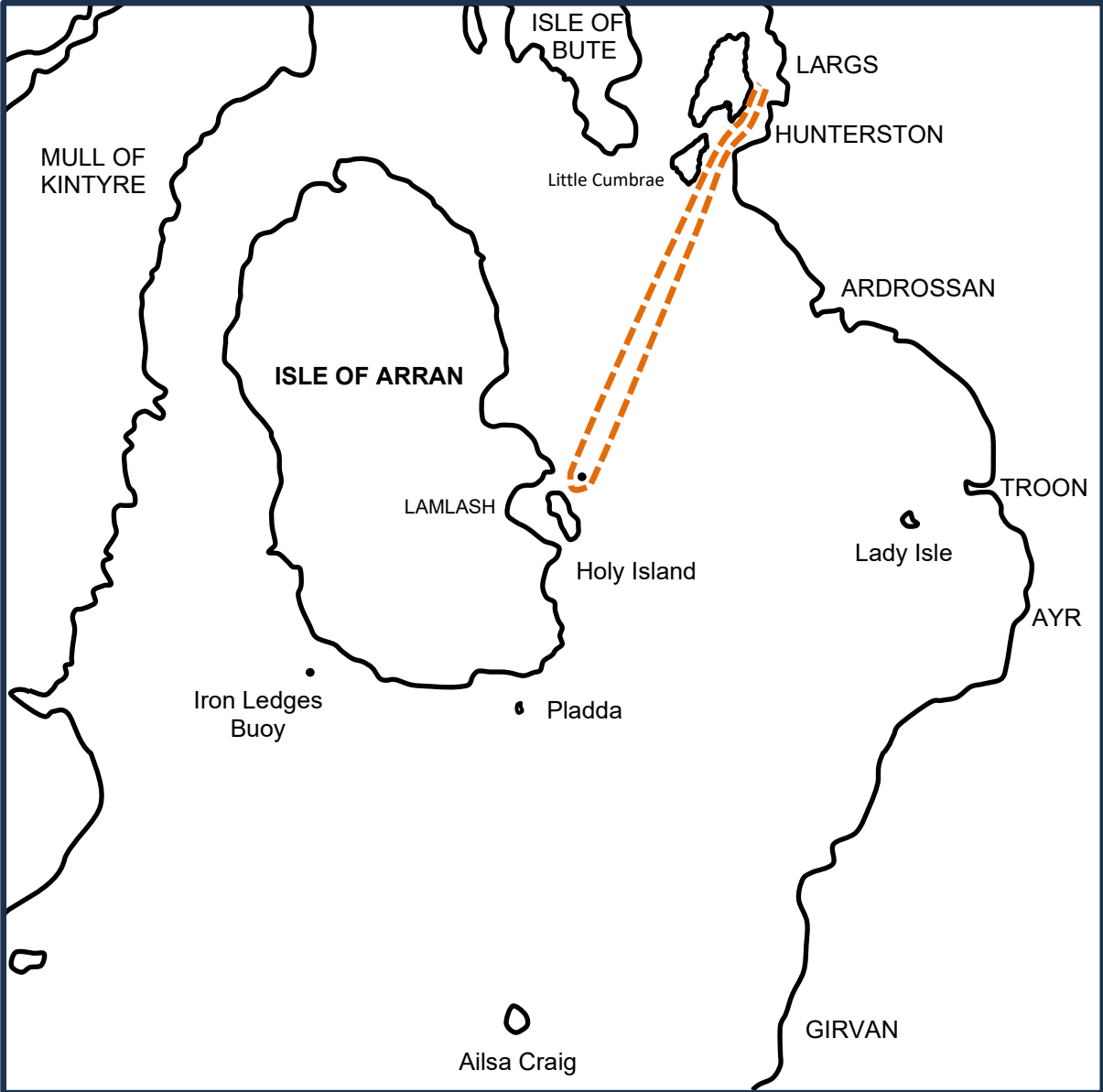
<b>CLASSES 1 and 2 ONLY</b>	
A figure of eight around Great and Little Cumbrae Islands – South About (approx. 15.5nm)	
<b>Mark</b>	<b>Direction</b>
Start/Finish Line	Cross North to South
“Hun 9” Nav Buoy (red)	Pass to STARBOARD
Little Cumbrae Island ( <i>rounding mark</i> )	Pass to PORT
“No 38” S. Cardinal Buoy	Pass to STARBOARD
“C” Nav Buoy (green)	Pass to STARBOARD
“Hun1” Nav Buoy (yellow)	Pass to STARBOARD
“Hun3” Nav Buoy (red)	Pass to STARBOARD
Start/Finish Line	Cross North to South
“Hun 9” Nav Buoy (red)	Pass to STARBOARD
Little Cumbrae Island ( <i>rounding mark</i> )	Pass to PORT
“No 38” S. Cardinal Buoy	Pass to STARBOARD
“C” Nav Buoy (green)	Pass to STARBOARD
“Hun1” Nav Buoy (yellow)	Pass to STARBOARD
“Hun3” Nav Buoy (red)	Pass to STARBOARD
Start/Finish Line	Cross North to South

<b>CLASS 3 and 4 ONLY</b>	
A single lap around Great Cumbrae Island – South About (approx. 11nm)	
<b>Mark</b>	<b>Direction</b>
Start/Finish Line	Cross North to South
“Hun 9” Nav Buoy (red)	Pass to STARBOARD
“No 38” S. Cardinal Buoy	Pass to STARBOARD
“C” Nav Buoy (green)	Pass to STARBOARD
“Hun1” Nav Buoy (yellow)	Pass to STARBOARD
“Hun3” Nav Buoy (red)	Pass to STARBOARD
Start/Finish Line	Cross North to South
“Hun 9” Nav Buoy (red)	Pass to STARBOARD
“No 38” S. Cardinal Buoy	Pass to STARBOARD
“C” Nav Buoy (green)	Pass to STARBOARD
“Hun1” Nav Buoy (yellow)	Pass to STARBOARD
“Hun3” Nav Buoy (red)	Pass to STARBOARD
Start/Finish Line	Cross North to South

## G.3 THE FINISH

- G3.1 The finishing line shall be between the mast displaying a blue flag on the committee vessel and an orange inflatable race mark.
- G3.2 **SHORTENED COURSE:** The course may be shortened at any mark of the course in accordance with RRS 32.2 or, in addition, at an inflatable buoy (that is not necessarily a pre-defined mark of the course) laid specifically for shortening the course. In the event of a shortened course boats shall finish between a committee vessel displaying flag "S" and the adjacent mark.
- G3.3 **TIME LIMITS:** The time limit for all classes is 1700. If one boat in a class finishes within the time limit the time limit will be extended by one hour for other boats in that class. Boats failing to finish within the time limit, and not subsequently retiring, penalized or given redress, will be scored Time Limit Expired (TLE) without a hearing. A boat scored TLE shall be scored points for the finishing place one more than the points scored by the last boat that finished within the time limit. This changes RRS 35, A5.1, A5.2 and A10

**Appendix H - HOLY ISLAND RACE**



*Diagrams are not to scale and should not be used for navigation.  
See Admiralty Chart SC2131 and SC2126 for more accurate information*

## H.1 THE START

H1.1 The starting line shall be between the staff displaying an orange flag on the committee vessel, anchored near Largs Yacht Haven, and an orange inflatable race mark.

## H.2 THE COURSE

H2.1 The Course for Classes 1 and 2 only is as follows:

<b>CLASSES 1 and 2 ONLY</b>	
To Holy Island and Back (approx. 32NM)	
<b>Mark</b>	<b>Direction</b>
Start Line	North to South
"Hun10" Nav Buoy (green)	Pass to PORT
Waypoint "H" - 55°31.897N, 05°03.255W, Approx 0.5NM NE of Holy Island	Pass to PORT
"Hun 9" Nav Buoy (red)	Pass to PORT
Finish Line	Cross South to North

H2.2 The course for Classes 3 and 4 will be selected from the list of marks at Appendix I and will be advised at the briefing and by VHF on the day

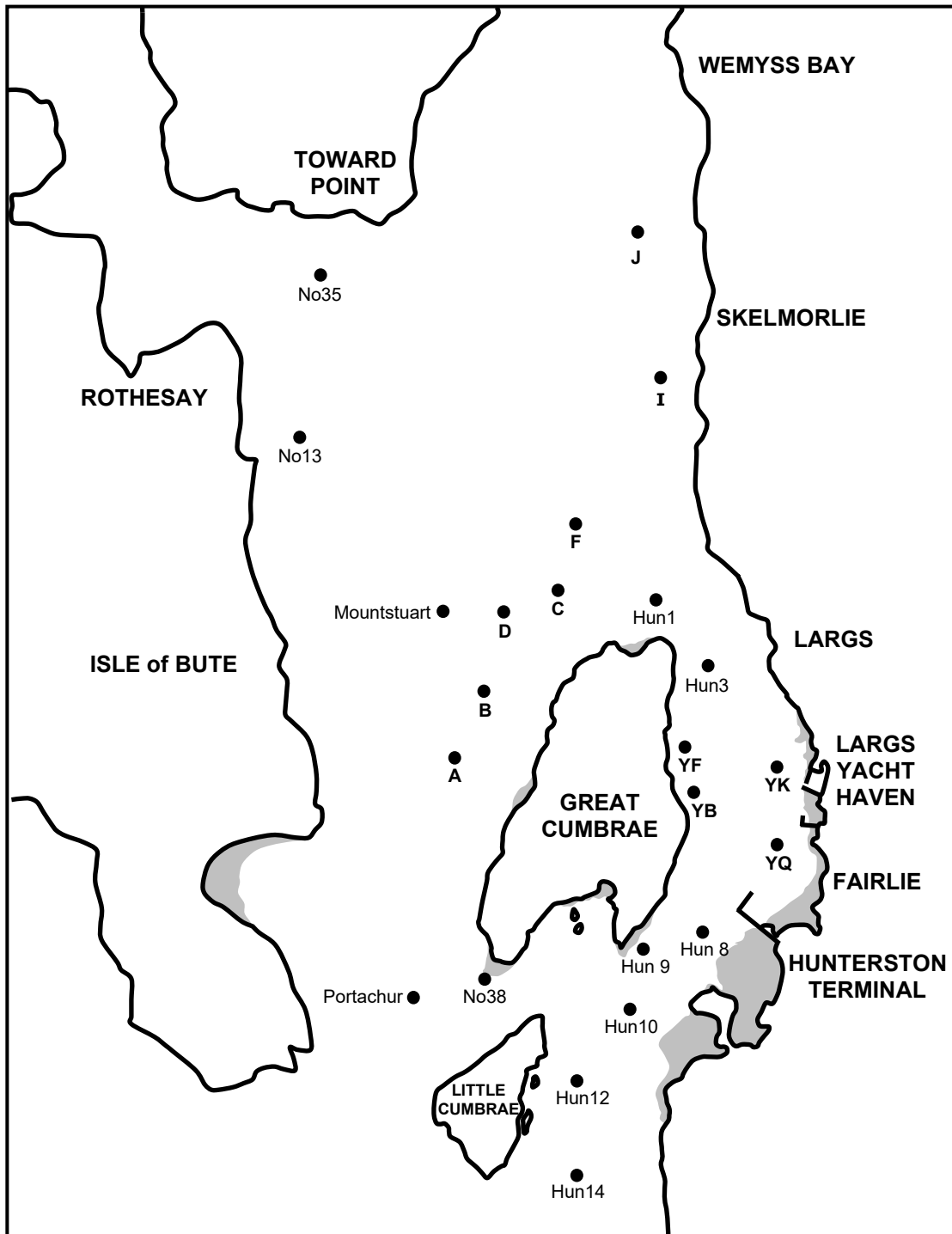
## H.3 THE FINISH

H3.1 The finishing line shall be between a flagpole displaying a blue flag on the Largs SC building and a blue inflatable race mark, located approximately 0.4NM to the west of LSC.

H3.2 **SHORTENED COURSE:** The course may be shortened at any mark of the course in accordance with RRS 32.2 or, in addition, at an inflatable buoy (that is not necessarily a pre-defined mark of the course) laid specifically for shortening the course. In the event of a shortened course boats shall finish between a committee vessel displaying flag "S" and the adjacent mark, the location of any such finishing line will be announced regularly by VHF.

H3.3 **TIME LIMITS:** The time limit for Classes 1 and 2 is 0200 on Saturday 20 June, the time limit for Classes 3 and 4 is 1900 on Friday 19 June. Boats failing to finish within the time limit, and not subsequently retiring, penalized or given redress, will be scored Time Limit Expired (TLE) without a hearing. A boat scored TLE shall be scored points for the finishing place one more than the points scored by the last boat that finished within the time limit. This changes RRS 35, A5.1, A5.2 and A10.

**Appendix I – Fixed Marks**



*Diagrams are not to scale and should not be used for navigation.  
See Admiralty Chart SC2131 for more accurate information*

**Appendix J –Fixed Marks Approximate Positions**

<b>Mark</b>	<b>Approximate Position</b>
"A" Navigation Buoy (green)	55°46.5N, 04°57.8W
"B" Navigation Buoy (yellow)	55°47.1N, 04°57.5W
"C" Navigation Buoy (green)	55°48.1N, 04°55.3W
"D" Navigation Buoy (red)	55°47.9N, 04°56.3W
"F" Navigation Buoy (red)	55°48.6N, 04°55.0W
"Hun 1" Navigation Buoy (yellow)	55°48.1N, 04°54.2W
"Hun 3" Navigation Buoy (red)	55°47.6N, 04°53.5W
"Hun 8" Navigation Buoy (green)	55°44.8N, 04°53.7W
"Hun 9" Navigation Buoy (red)	55°44.7N, 04°54.4W
"Hun 10" Navigation Buoy (green)	55°44.2N, 04°54.9W
"Hun 12" Navigation Buoy (red)	55°43.5N, 04°55.6W
"Hun 14" Navigation Buoy (red)	55°42.5N, 04°55.6W
"I" Navigation Buoy (green)	55°50.3N, 04°54.3W
"Iron Rock Ledges" Navigation Buoy (green)	55°26.9N, 05°18.8W
"J" Navigation Buoy (red)	55°51.5N, 04°54.7W
"L" Navigation Buoy (red)	55°52.4N, 04°54.7W
"Mountstuart" Mid Channel Mark (red white)	55°48.0N, 04°57.6W
"No 13" Isolated Danger Beacon (black red black)	55°49.7N, 05°00.2W
"No 35" Navigation Buoy (green)	55°51.0N, 05°00.0W
"No 38" South Cardinal Buoy (yellow black)	55°44.4N, 04°57.1W
"O" Navigation Buoy (green)	55°54.6N, 04°54.5W
"Portachur" Navigation Buoy (green)	55°44.3N, 04°58.5W
"YB" Orange Yacht Club Race Mark	55°46.2N, 04°53.7W
"YF" Orange Yacht Club Race Mark	55°46.7N, 04°53.8W
"YK" Orange/Black Yacht Club Race Mark	55°46.6N, 04°53.9W
"YQ" Orange Yacht Club Race Mark	55°45.7N, 04°52.3W